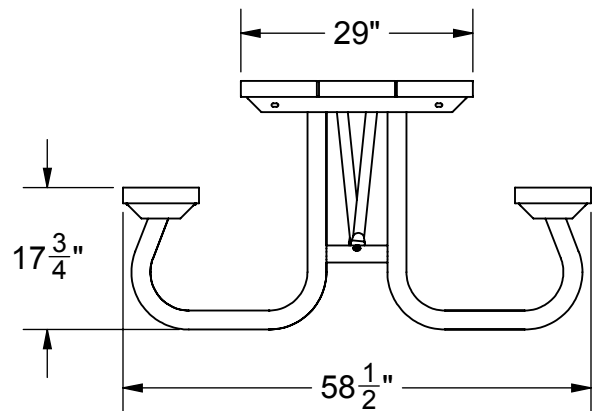
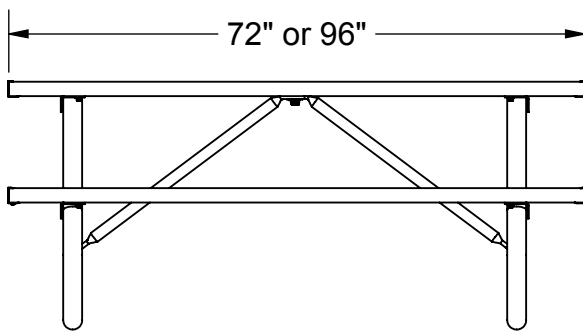
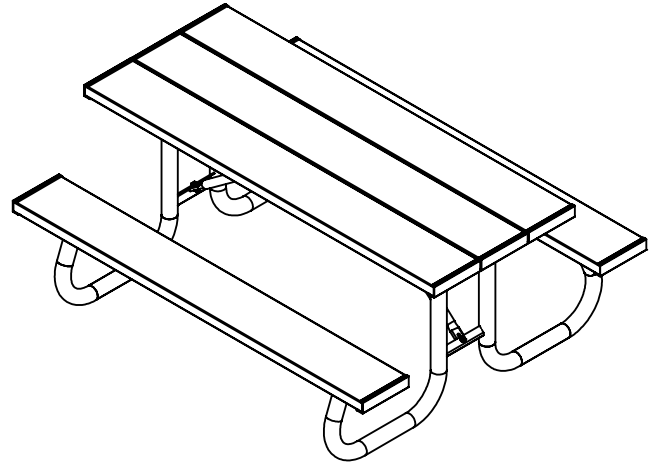


ALUMINUM PICNIC TABLE

MODEL 1131-06 6 FT. PICNIC TABLE (170 LBS)
MODEL 1131-08 8 FT. PICNIC TABLE (180 LBS)



SPECIFICATIONS:

General: A heavy-duty table with galvanized steel frames and anodized aluminum seats and table planks.


Table Support Assembly: Formed and welded into a single unit consisting of 2-3/8" O.D. galvanized steel and 2" x 3" x 3/16" steel angle. Two supports are supplied for 6' & 8' tables. Welded construction of frames eliminates excess hardware and simplifies assembly. The result is a wide end-frame designed for anti-tipping protection without permanent anchoring.

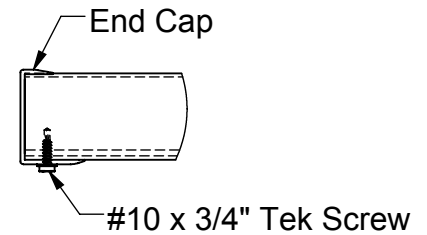
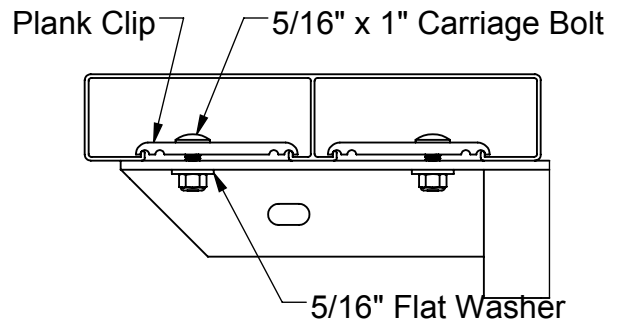
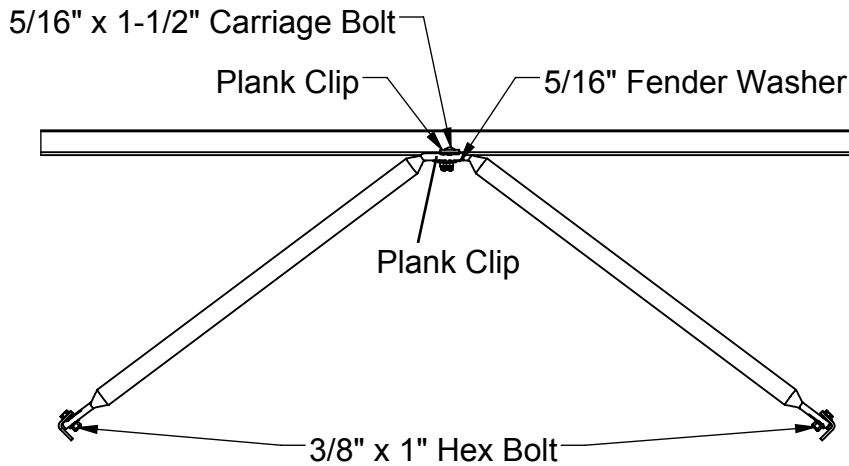
Table Support Brace: 1-3/8" O.D. galvanized steel.

Aluminum Table Top & Seats: 2" x 10" nominal size anodized aluminum planks.

Finish: Aluminum plank finish is clear anodized. All hardware is zinc-plated for long rust-free service. Frames available galvanized or coated with polyester TGIC powder coating.

Warranty Period: 3 years.

| | | |
|--|-----------------|--|
|  <p>ATHLETIC MFG. CO.</p> | Date: 3/10/2015 | SPECIFICATION / INSTALLATION INSTRUCTIONS <i>ALUMINUM PICNIC TABLE</i> |
| | Rev: 2/22/17 | |
| | Drawn: MT | MODEL NO. |
| | Sheet: 1 of 2 | <h1>1131-06 & -08</h1> |



INSTALLATION INSTRUCTIONS:

- 1) Locate five (5) aluminum planks and ten (10) end caps. Assemble end caps to aluminum planks using two (2) Tek screws in each end cap.
- 2) Lay three (3) planks upside down next to each other making sure planks are aligned.
- 3) Position table support assembly upside down across the three (3) planks. Align the mounting holes in the welded angle (top of the table support assemblies) approximately 8-1/4" from the ends. The two (2) center table support assemblies are positioned 55-1/2" on center for the 6' table and 79-1/2" on center for the 8' table. Attach the table support assemblies using aluminum plank clips and 5/16" x 1" carriage bolts, washers, and nuts provided. NOTE: Tighten bolts only finger tight until assembly is completed.
- 4) Attach table support braces to welded angled spacer on table support assemblies. Use 3/8" x 1" hex bolts, washers, and nuts provided.
- 5) The other end of the table support brace is attached using aluminum plank clips and 5/16" x 1-1/2" carriage bolt, washer and nut provided.
- 6) Attach seat planks using same method as table planks above.
- 7) When table is completely assembled, straighten and align end frames and plank ends. Tighten all hardware. Turn table over and set in final position.

| DESCRIPTION | -06 QTY. | -08 QTY. |
|------------------------------|----------|----------|
| Picnic Table J Frame | 2 | 2 |
| Aluminum Plank - 6 FT. | 5 | |
| Aluminum Plank - 8 FT. | | 5 |
| Table Brace - 35" | 2 | |
| Table Brace - 45" | | 2 |
| Aluminum End Cap | 10 | 10 |
| #10 x 3/4" Tek Drive Screw | 20 | 20 |
| Aluminum Plank Clip | 24 | 24 |
| 5/16" x 1" Carriage Bolt | 20 | 20 |
| 5/16" Flat Washer | 22 | 22 |
| 5/16" Lock Nut | 22 | 22 |
| 5/16" x 1-1/2" Carriage Bolt | 2 | 2 |
| 5/16" Fender Washer | 2 | 2 |
| 3/8" x 1" Hex Bolt | 2 | 2 |
| 3/8" Flat Washer | 4 | 4 |
| 3/8" Lock Nut | 2 | 2 |



Date: 3/10/2015
 Rev: 2/22/17
 Drawn: MT
 Sheet: 2 of 2

SPECIFICATION / INSTALLATION INSTRUCTIONS

ALUMINUM PICNIC TABLE

MODEL NO.

1131-06 & -08

Pick Ticket

Internal use only return to office with packet

Shipping to pull Plank, Braces, and Hardware. Fabrication to provide table legs if shortages occur notify office immediately.

| DESCRIPTION | -06 QTY. | -08 QTY. |
|------------------------------|----------|----------|
| Picnic Table J Frame | 2 | 2 |
| Aluminum Plank - 6 FT. | 5 | |
| Aluminum Plank - 8 FT. | | 5 |
| Table Brace - 35"-CIPICTAB6 | 2 | |
| Table Brace - 45"-CIPICTAB8 | | 2 |
| Aluminum End Cap | 10 | 10 |
| #10 x 3/4" Tek Drive Screw | 20 | 20 |
| Aluminum Plank Clip | 24 | 24 |
| 5/16" x 1" Carriage Bolt | 20 | 20 |
| 5/16" Flat Washer | 22 | 22 |
| 5/16" Lock Nut | 22 | 22 |
| 5/16" x 1-1/4" Carriage Bolt | 2 | 2 |
| 5/16" Fender Washer | 2 | 2 |
| 3/8" x 1" Hex Bolt | 2 | 2 |
| 3/8" Flat Washer | 4 | 4 |
| 3/8" Lock Nut | 2 | 2 |

