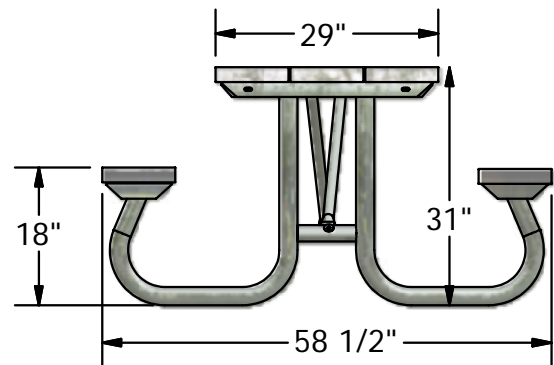
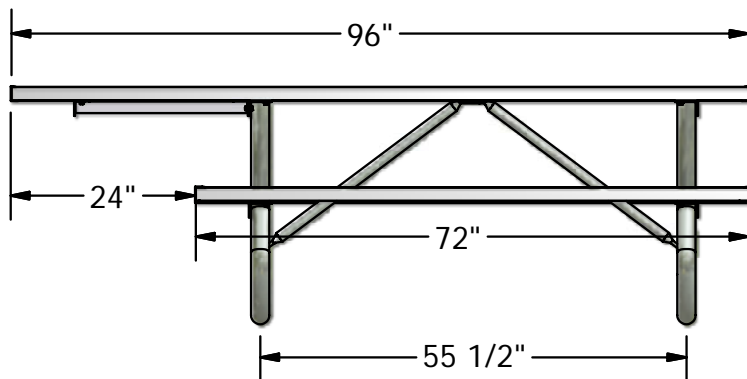
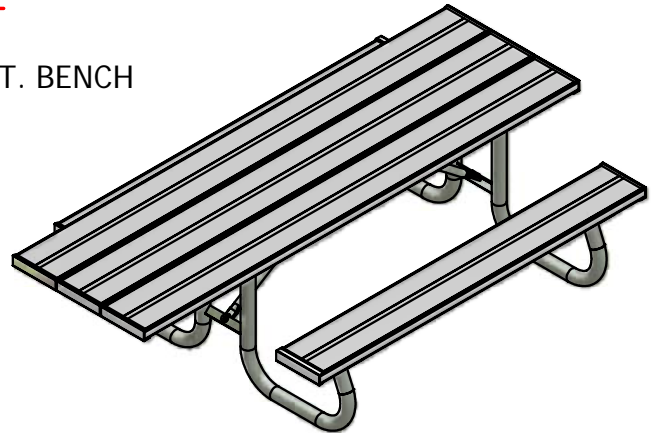


ALUMINUM PICNIC TABLE

□ MODEL 1131-ADA (ADA) 8 FT. TABLE AND 6 FT. BENCH
PICNIC TABLE (175 LBS)

FRAMES AVAILABLE IN GALVANIZED
OR POWDER COATED



SPECIFICATIONS:

General: A heavy-duty table with galvanized steel frames and anodized aluminum seats and table planks.

Table Support Assembly: Formed and welded into a single unit consisting of 2-3/8" O.D. galvanized steel and 2" x 2" x 3/16" steel angle. Two supports are supplied for 6' & 8' tables, and three supports for 12'. Welded construction of frames eliminates excess hardware and simplifies assembly. The result is a wide end-frame designed for anti-tipping protection without permanent anchoring.

Table Support Brace: 1-3/8" O.D. galvanized steel.

Aluminum Tabletop & Seats: 2" x 10" nominal size (1-3/4" x 9 1/2" finish size) aluminum.

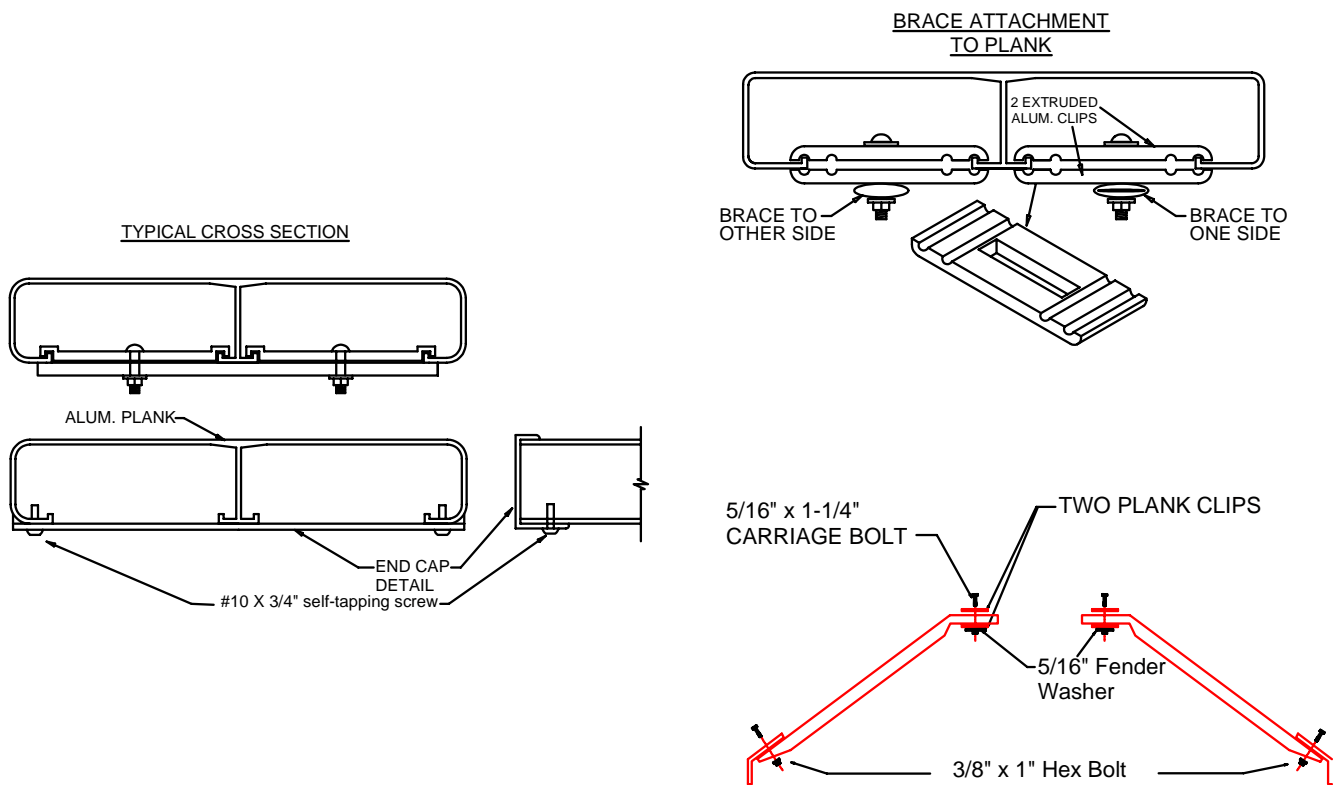
Finish: All welds are ground smooth. Aluminum plank finish is clear anodized. All hardware is zinc-plated for long rust free service.


Warranty Period: 3 Years

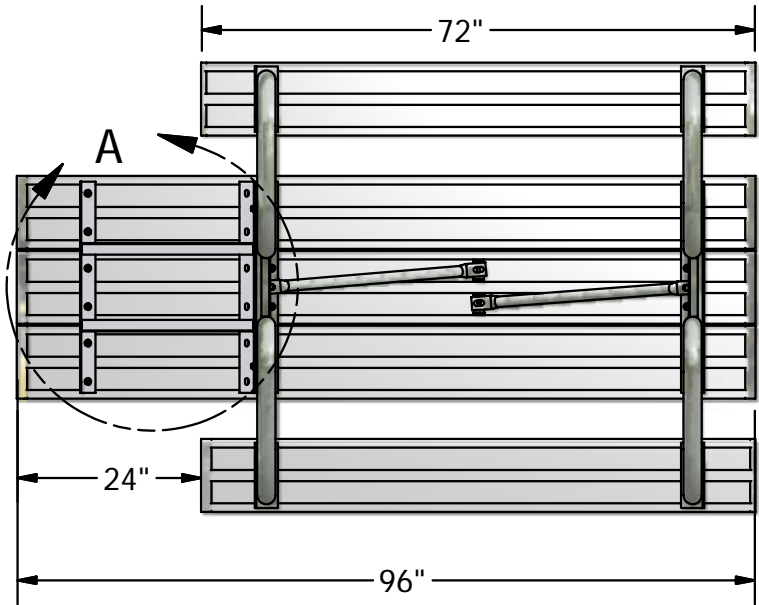
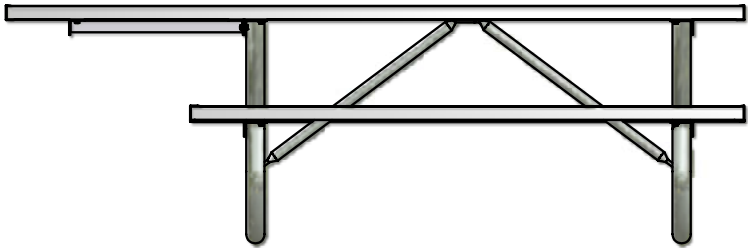
	Date: 10-11-12	SPECIFICATION/INSTALLATION INSTRUCTIONS
	Rev:	
	Drawn: AMC	MODEL NO.
	Sheet: 1 of 3	MODEL 1131-ADA

INSTALLATION INSTRUCTIONS:

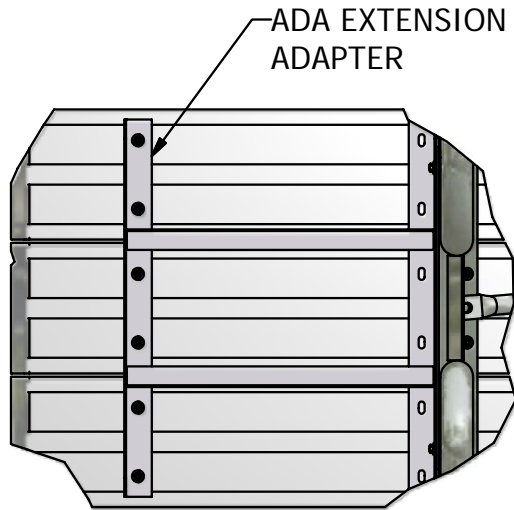
- 1) Locate five (5) aluminum planks and ten (10) end caps. Assemble end caps to aluminum planks using two Tek Screws in each end cap, install #10 x 3/4" TEK drive screws. (See below)
- 2) Lay three planks upside down next to each other making sure planks are aligned.
- 3) Position table support assembly upside down across the three planks. Align the mounting holes in the welded angle (top of the table support assemblies) approximately 9" from the ends The two center table support assemblies are positioned on 55-1/2" center for 6', and 79-1/2" centers for 8'. Attach the table support assemblies using aluminum plank clips and 5/16" x 1" carriage bolts, washer and nut provided. Note: Tighten bolts only finger tight until assembly is completed.
- 4) Attach table support brace to welded angled spacer on table support assemblies. Use 3/8" x 1" hex bolts, washer and nut provided.
- 5) The other end of table support brace is attached using two aluminum plank clips and 5/16" x 1-1/4" carriage bolts, washer and nuts provided. Attach seat planks using aluminum plank clips, 5/16" x 1" carriage bolts, washers and nuts provided. Note: Tighten bolts only finger tight until assembly is completed.
- 6) When table is completely assembled, straighten and align end frames and plank ends. Tighten all hardware. Turn table over.
- 7) Attach seat planks to table supports as in steps 1 through 6. Tighten hardware.



 <p>Patterson-Williams ATHLETIC MFG. CO. QUALITY ATHLETIC AND PARK EQUIPMENT SINCE 1919</p>	Date: 10-11-12	SPECIFICATION/INSTALLATION INSTRUCTIONS
	Rev:	
	Drawn: AMC	MODEL NO.
	Sheet: 2 of 3	MODEL 1131-ADA



Component Description	Qty
Aluminum End Cap	10
Aluminum Plank - 8 FT.	3
Aluminum Plank - 6 FT.	2
ADA Adapter	1
Brace Pipe - 35-3/4"	2
#10 X 3/4" TEK Drive Screw	20
Aluminum Plank Clip	28
5/16"-18 X 1" Carriage Bolt	26
5/16"-18 Lock Nut - Nylock	28
5/16" Flat Washer	26
3/8"-16 x 1" Hex Bolt	4
3/8" Flat Washer	8
3/8"-16 Lock Nut - Nylock	4
5/16"-18 x 1-1/4" Carriage Bolt(Brace)	2
5/16" Fender Washers(Brace)	2



DETAIL A



Date: 10-11-12
 Rev:
 Drawn: AMC
 Sheet: 3 of 3

SPECIFICATION/INSTALLATION INSTRUCTIONS

ALUMINUM PICNIC TABLE - ADA

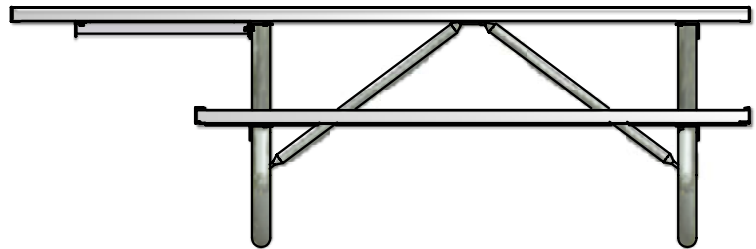
MODEL NO.

MODEL 1131-ADA

Pick Ticket

Internal use only return to office with packet

Shipping to pull Plank, Braces, and Hardware. Fabrication to provide table legs and ADA spline if shortages occur notify office immediately.



Component Description	Qty
Aluminum End Cap	10
Aluminum Plank - 8 FT.	3
Aluminum Plank - 6 FT.	2
ADA Adapter	1
Brace Pipe - 35-3/4"	2
#10 X 3/4" TEK Drive Screw	20
Aluminum Plank Clip	28
5/16"-18 X 1" Carriage Bolt	26
5/16"-18 Lock Nut - Nylock	28
5/16" Flat Washer	26
3/8"-16 x 1" Hex Bolt	4
3/8" Flat Washer	8
3/8"-16 Lock Nut - Nylock	4
5/16"-18 x 1-1/4" Carriage Bolt(Brace)	2
5/16" Fender Washers(Brace)	2