

SITE FURNISHINGS

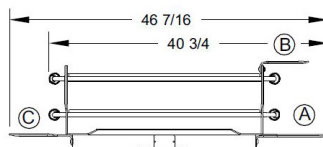
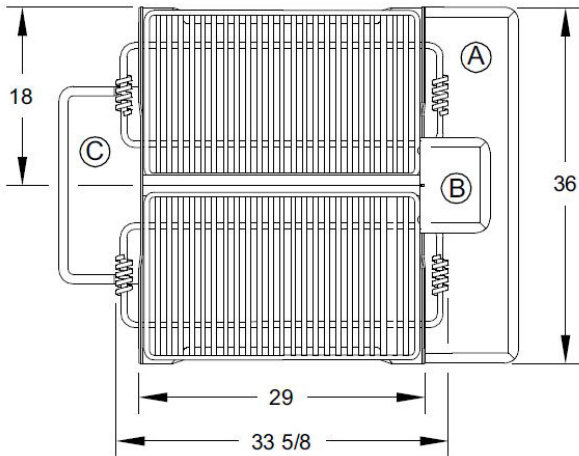
MODEL #1140-20- LARGE GROUP GRILL (215 LBS)

MODEL #1140-20SH - 12" X 36" SHELF (16 LBS, INCLUDED)

MODEL #1140-10SH - 7-1/8" X 9-5/8" SHELF (8 LBS, ADD-ON OPTIONAL)

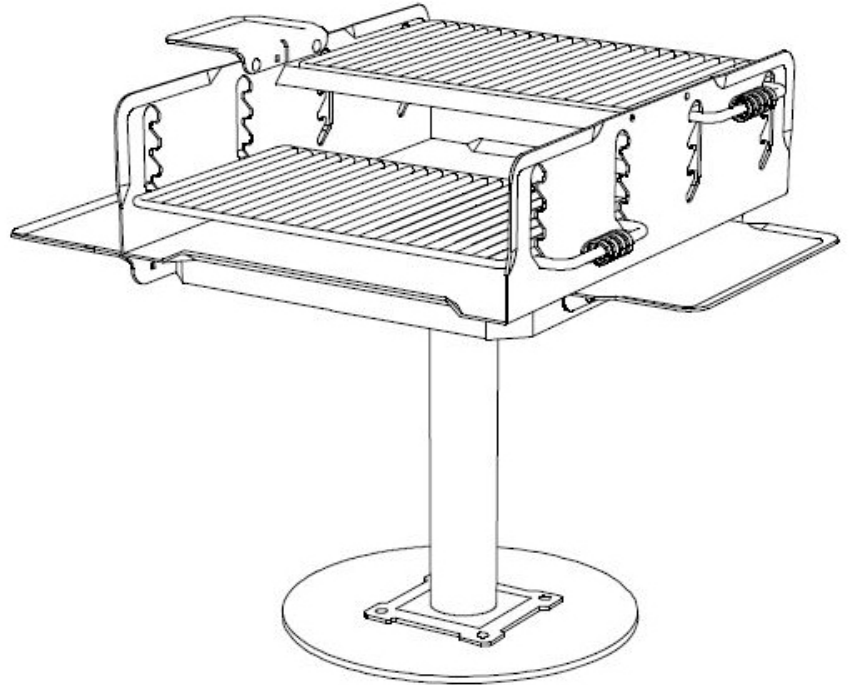
MODEL #1140-20POST - SURFACE MOUNT POST (STANDARD)

MODEL #1140-20IGPOST - IN GROUND MOUNT POST (ADD-ON OPTIONAL)



NOTE:
LOCAL SOIL
CONDITIONS MAY
REQUIRE A
LARGER FOOTING

B7 SURFACE MOUNT
INSTALLATION



(A) GRILL IS STANDARD WITH SIDE SHELF.
A SECOND SHELF MAY BE MOUNTED ON THE
OPPOSITE SIDE OF THE GRILL BOX.

SPECIFICATIONS:

Model 1140-20 has two identical 504 sq in cooking grates, for a combined cooking area of 1008 sq in. Mounted in a 28" x 36" x 10" high firebox.

Firebox: The firebox is constructed entirely of 3/16" plate steel with integral ash flange die-formed into front edge to retain ashes and provide reinforcement. All exposed corner are rounded to 1-1/2" radius and all edge connections are entirely welded. Allowance for drainage is provided.

Grates: Constructed from 5/8" diameter A-36 steel bars for support handles, and 1/2" diameter A-36 steel bars spaced 1-1/8" on centers to provide the grate surface.

Utility Shelves: are steel plates that bolt to the sides of the grill with 3/8" X 3/4" Carriage Bolts.

Warranty: 3 years



SCALE: N.T.S.
DATE: 3/14/16
DRAWN: RD
REV: 03/02/21
SHEET: 1 of 2

SPECIFICATION / INSTALLATION INSTRUCTIONS

1140 SERIES GRILLS

1140-20

SITE FURNISHINGS

INSTALLATION:

Inground Mounting:

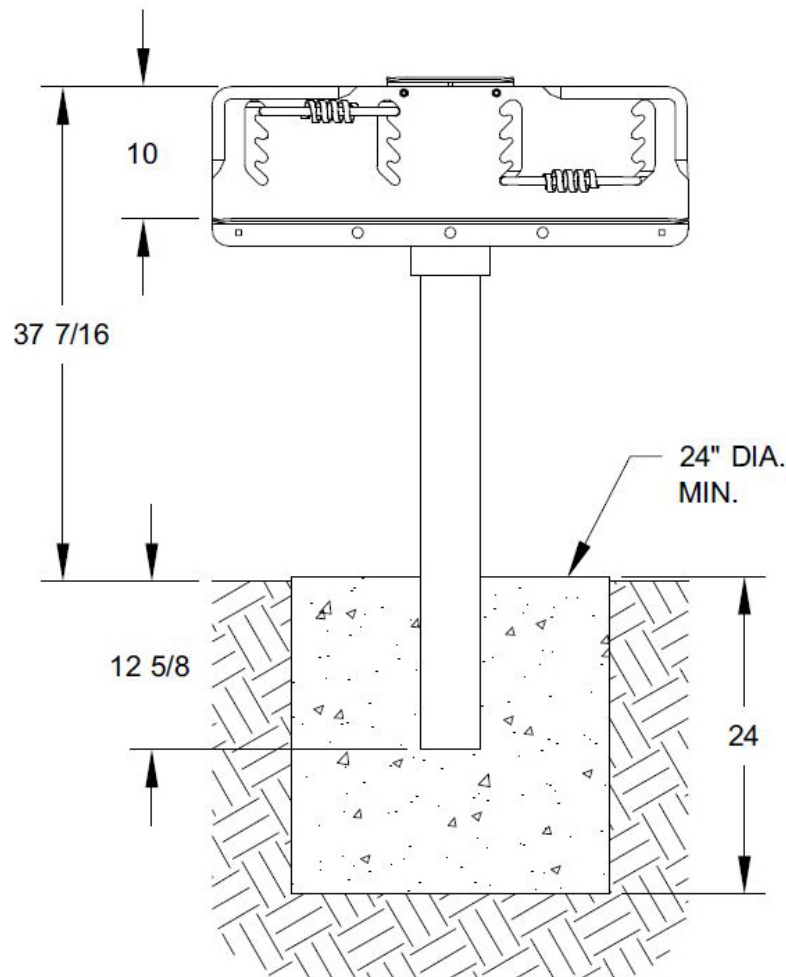
Dig hole per footing detail. Take the end of the post base that has 2 holes in it and place the opposite end into the center of the hole and shim from below. Plumb the post and pour concrete up to within 2" of finish grade for field install or to finish grade. Allow concrete to set for 3 days before removal of bracing and completion of installation. Cover footing with turf.

Surface Mounting:

Anchor Grill to concrete pavement using 3/8" anchor bolts and secure tight

Install the grill on the post base. Line up the holes in the grill swivel mechanism with the holes in the post base. Insert the locking pin provided through the aligned holes leaving an equal length of pin protruding from each side of the swivel mechanism. Rotate the grill one complete turn the locking pin will be bent and drawn into the swivel mechanism to lock the grill onto the post base.

For large group grill shelf, attach to bottom flange of the grill with three (3) 3/8" x 3/4" Carriage Bolts.



SCALE: N.T.S.
DATE: 3/14/16
DRAWN: RD
REV: 03/02/21
SHEET: 2 of 2

SPECIFICATION / INSTALLATION INSTRUCTIONS

1140 SERIES GRILLS

1140-20