

HEAVY-DUTY GALVANIZED STEEL PICNIC TABLE

MODEL 1145-06 6 FT. TABLE
MODEL 1145-08 8 FT. TABLE
MODEL 1145-ADA ADA: 8 FT. TOP & 6 FT. SEATS

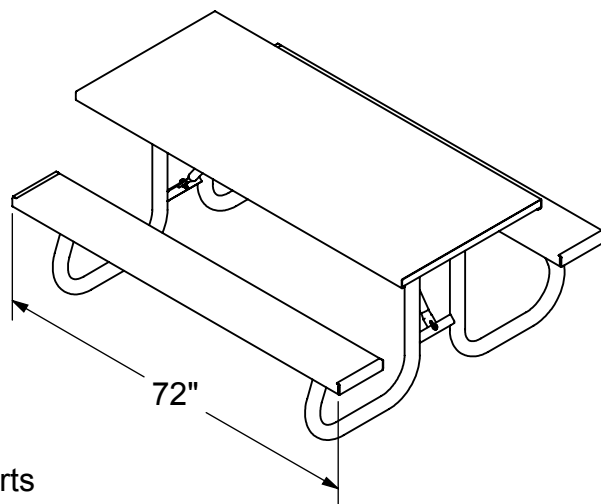
SPECIFICATIONS:

LEG FRAME: One piece welded construction 2-3/8" O.D. galvanized steel frame with welded angles.

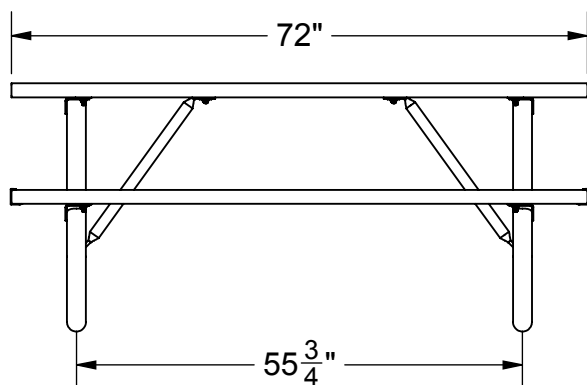
TABLE TOP & SEATS: 14ga galvanized steel with supports made from 1-1/2" steel tube and 2" steel plate.

BRACE PIPE: Formed from 1-3/8" O.D. galvanized steel tube.

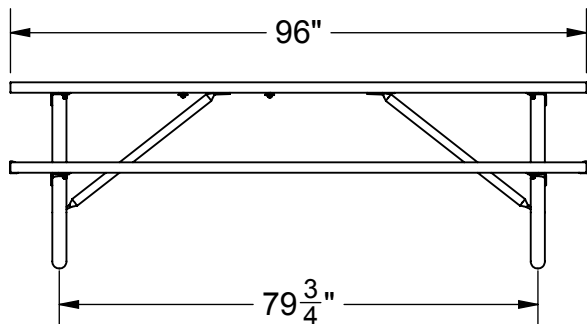
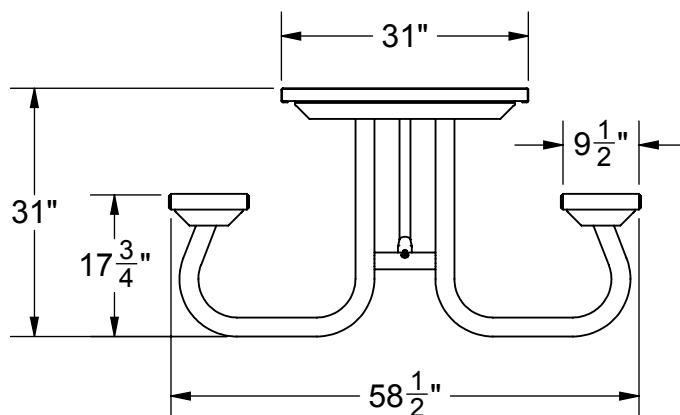
HARDWARE: All hardware is Stainless Steel for long, rust-resistant service.



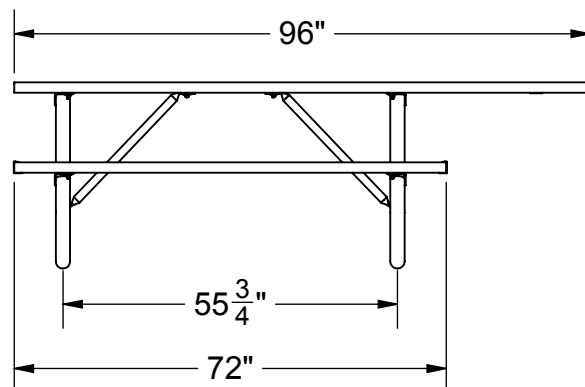
Model 1145-06
Shown



MODEL 1145-06



MODEL 1145-08



MODEL 1145-ADA



Date: 1/8/2015
 Rev: SS8/9/17
 Drawn: MT
 Sheet: 1 of 3

SPECIFICATION / INSTALLATION INSTRUCTIONS

HEAVY-DUTY PICNIC TABLE

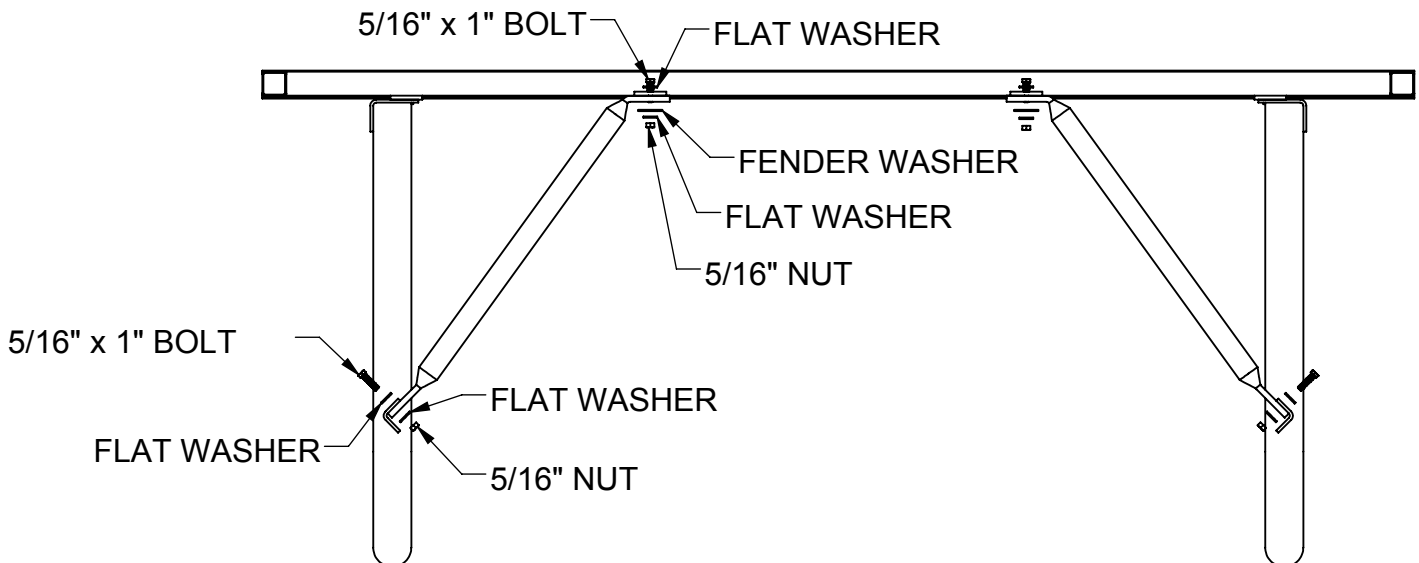
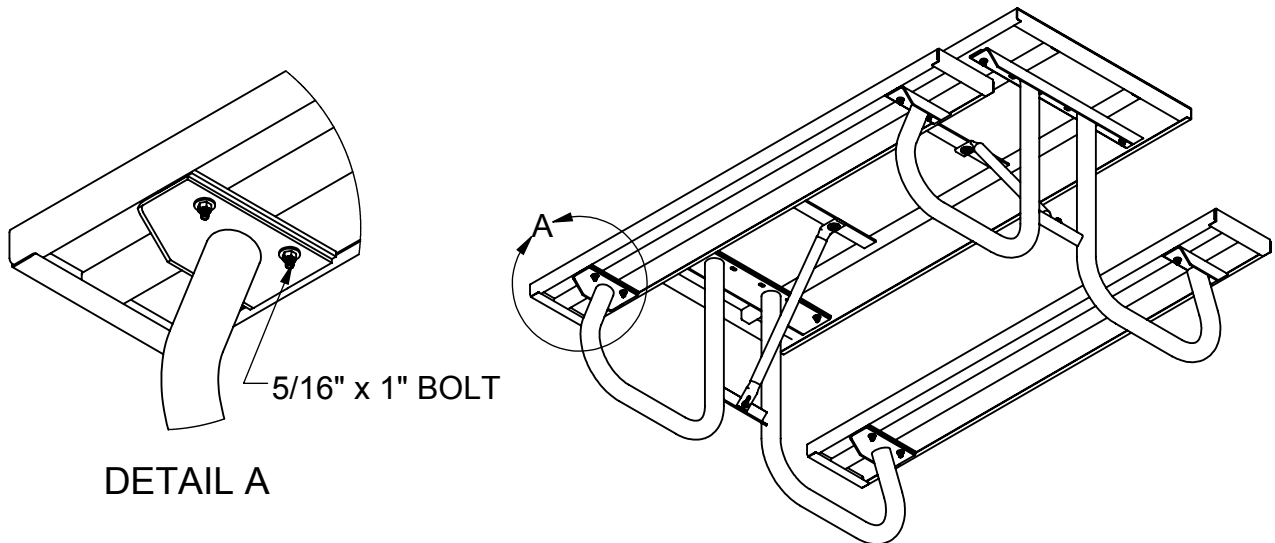
MODEL NO.

1145

HEAVY-DUTY GALVANIZED STEEL PICNIC TABLE

INSTALLATION INSTRUCTIONS:

1. Organize all table pieces on clean, flat surface
2. Turn table top face down.
3. Align one table frame onto pre-drilled holes in support tubing, Use 5/16" Nut, Bolt, and Washers and finger tighten only.
4. Install braces on table top with 5/16" x 1" bolts, nuts, & washers. (See detail) Finger tighten all bolts.
5. Attach bench to "J" frames as in step 4 above. (Note: this is considered a two person operation). Finger tighten all bolts.
6. After all benches, braces, and frames are attached, tighten all bolts snugly with wrench starting with "J" frames onto table top then braces and finally seats.



Date: 1/8/2015
Rev: SS8/9/17
Drawn: MT
Sheet: 2 of 3

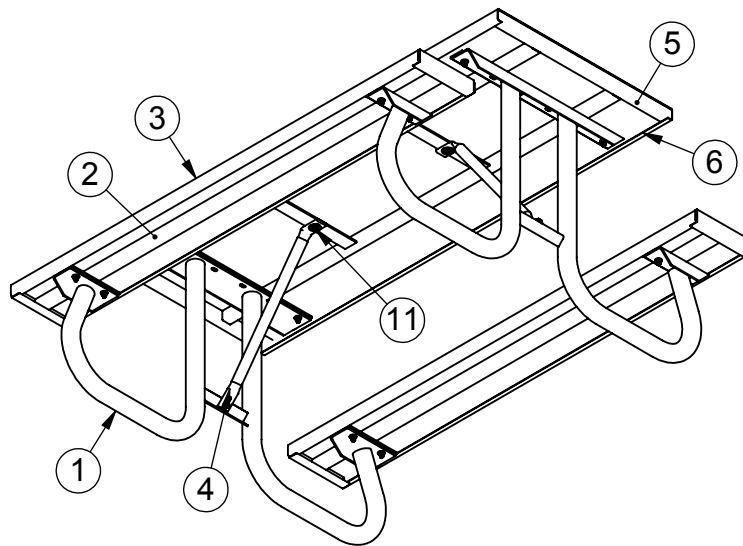
SPECIFICATION / INSTALLATION INSTRUCTIONS

HEAVY-DUTY PICNIC TABLE

MODEL NO.

1145

1145-06 & 1145-08 Material List			
ITEM	QTY	PART NUMBER	DESCRIPTION
1	2	J-FRAME-SA	2-3/8" O.D. Table J-Frames
2	2	Seat Support Assembly	Galvanized Seat Assembly (6' or 8')
3	2	Galvanized Seat	One Piece Galvanized Seat (6' or 8')
4	2	Table Brace	1-3/8" Table Brace 6' Brace= 26-3/4" 8' Brace= 35-1/4"
5	1	Top Support Assembly	Galvanized Table Top Assembly (6' or 8')
6	1	Galvanized Top	One Piece Galvanized Top (6' or 8')
7	16	5/16" Hex Bolt	5/16-18 x 1" Hex Bolt
8	30	Washer	5/16" Flat Washer
9	16	Nylock Nut	5/16" Nylock Nut
10	2	Washer	5/16" Fender Washer



1145-ADA Material List			
ITEM	QTY	PART NUMBER	DESCRIPTION
1	2	J-FRAME-SA	2-3/8" O.D. Table J-Frames
2	2	Seat Support Assembly	6' Galvanized Seat Assembly
3	2	Galvanized Seat	6' One Piece Galvanized Seat
4	2	Table Brace	1-3/8" Table Brace 6' Brace= 26-1/4"
5	1	Top Support Assembly	8' Galvanized Table Top Assembly
6	1	Galvanized Top	8' One Piece Galvanized Top
7	16	5/16" Hex Bolt	5/16-18 x 1" Hex Bolt
8	30	Washer	5/16" Flat Washer
9	16	Lock Nut	5/16" Nylock Nut
10	2	Washer	5/16" Fender Washer



Date: 1/8/2015
Rev: SS8/9/17
Drawn: MT
Sheet: 3 of 3

SPECIFICATION / INSTALLATION INSTRUCTIONS

HEAVY-DUTY PICNIC TABLE

MODEL NO.

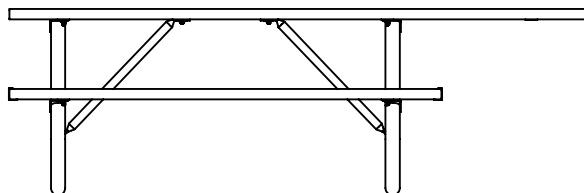
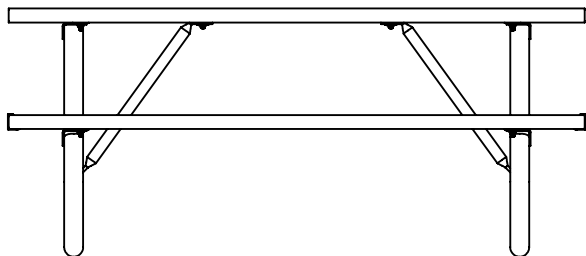
1145

Pick Ticket

Internal use only return to office with packet

Shipping to pull Braces, and Hardware. Fabrication to provide table legs and tops if shortages occur notify office immediately.

1145-06 & 1145-08 Material List			
ITEM	QTY	PART NUMBER	DESCRIPTION
1	2	J-FRAME-SA	2-3/8" O.D. Table J-Frames
2	2	Seat Support Assembly	Galvanized Seat Assembly (6' or 8')
3	2	Galvanized Seat	One Piece Galvanized Seat (6' or 8')
4	2	Table Brace	1-3/8" Table Brace 6' Brace= 26-3/4" 8' Brace= 35-1/4"
5	1	Top Support Assembly	Galvanized Table Top Assembly (6' or 8')
6	1	Galvanized Top	One Piece Galvanized Top (6' or 8')
7	16	5/16" Hex Bolt	5/16-18 x 1" Hex Bolt
8	30	Washer	5/16" Flat Washer
9	16	Nylock Nut	5/16" Nylock Nut
10	2	Washer	5/16" Fender Washer



1145-ADA Material List			
ITEM	QTY	PART NUMBER	DESCRIPTION
1	2	J-FRAME-SA	2-3/8" O.D. Table J-Frames
2	2	Seat Support Assembly	6' Galvanized Seat Assembly
3	2	Galvanized Seat	6' One Piece Galvanized Seat
4	2	Table Brace	1-3/8" Table Brace 6' Brace= 26-1/4"
5	1	Top Support Assembly	8' Galvanized Table Top Assembly
6	1	Galvanized Top	8' One Piece Galvanized Top
7	16	5/16" Hex Bolt	5/16-18 x 1" Hex Bolt
8	30	Washer	5/16" Flat Washer
9	16	Lock Nut	5/16" Nylock Nut
10	2	Washer	5/16" Fender Washer