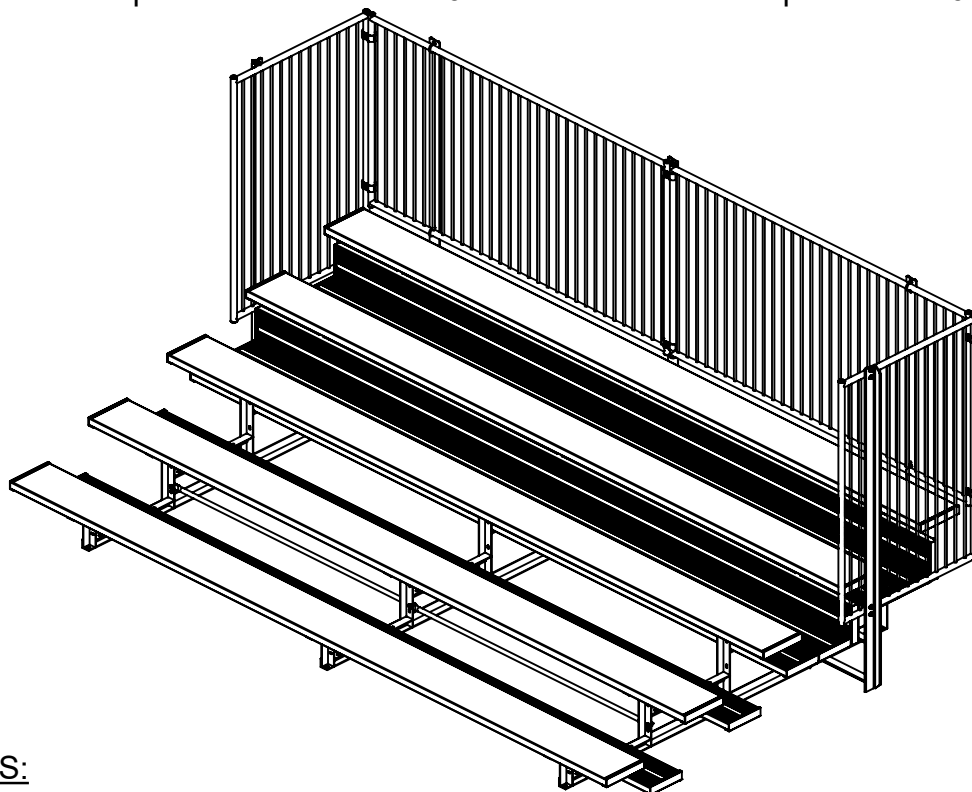


# DELUXE SERIES 5-ROW 15' BLEACHER

MODEL 1183-515MESHG 5-ROW 15' STEEL WITH MESH GUARDRAIL  
MODEL 1183-515MESHA 5-ROW 15' ALUMINUM WITH MESH GUARDRAIL

MODEL 1183-515VBGRG 5-ROW 15' STEEL WITH VBGR GUARDRAIL  
MODEL 1183-515VBGRA 5-ROW 15' ALUMINUM WITH VBGR GUARDRAIL  
(VBGR = VERTICAL BAR GUARDRAIL)

Deluxe Series designed for dependability and trouble-free maintenance. Featuring 6" rise from row to row with nominal 12" aluminum planks for seats and 10" for footboards. And optional 2" x 6" ground sills



## SPECIFICATIONS:

Bleacher Frames are fabricated from 2" x 2" x 3/16" steel or aluminum angle. Frames are welded into a single unit. Frames may have optional 2" x 6" ground sills at every point where frames are in contact with the ground.

Deluxe Series Bleachers conform to the requirements of ICC 300-2012.

Seat and Foot Planks: Seat planks are nominal 2"x12"x15' and foot planks are 2"x10"x15' extruded, ribbed aluminum. The edges and tops of planks shall be ribbed. The ribbed pattern, non-slip surface, is designed for safety and comfort. All exposed ends shall have aluminum caps fastened to the underside of the plank. Planks secure to each frame with two friction-type aluminum mounting clips capable of securing the plank against movement under a horizontal force of 400 lbs. All hardware is provided.

Finish: All fasteners shall be zinc plated.



Date: 4/28/2021

Rev: A

Drawn: JBN

Sheet: 1 of 16

## PRODUCT NAME

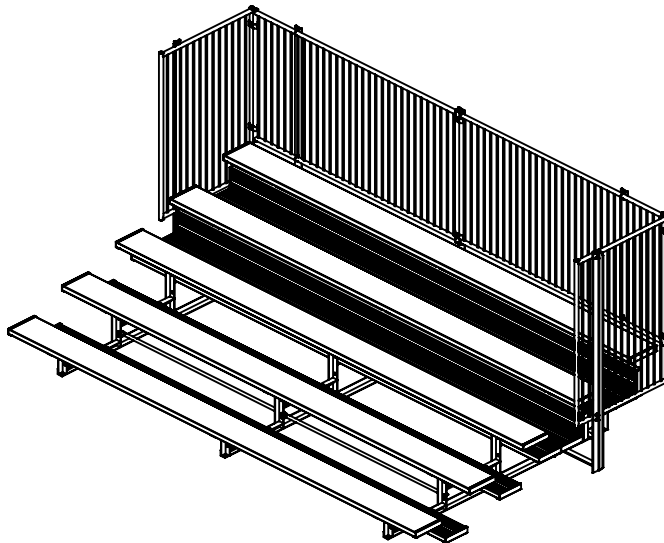
# 5 ROW DELUXE 15FT

MODEL NO.

# 1183-515

# BOM PARTS & FASTENERS

ITEM NO.	PART NUMBER	DESCRIPTION	
1	ROW5A or ROW5G	BLEACHER 5-ROW DELUXE FRAME	3
2	CIBLB74.625	BLEACHER BRACE 74-5/8" LONG	4
3	CIBLB76.375	BLEACHER BRACE 76-3/8" LONG	2
4	RMPLK15-12	ALUMINUM PLANK ANODIZE 12"x 180"	5
5	RMPLK15-10	ALUMINUM PLANK MILL 10"x 180"	8
6	VCIAECP212	2"x12" ALUM. END CAP	10
7	VCIAECP	2"x10" ALUM. END CAP	16
8	VCIACLP	BOLT CLIP FOR 10" & 12" ALUMINUM PLANK	78
9	BLSEATADPT	DELUXE SEAT ADAPTER 2" x 11"	15
10	HWCB516114	5/16-18 X 1 CARRIAGE BOLT GRADE 2 ZINC	66
11	HWCB5163	5/16-18 X 3 CARRIAGE BOLT ZINC (600)	12
12	HWFLWA516	5/16 FLAT WASHER	94
13	HWLN516	5/16 NYLOK NUT ZINC	94
14	HWLN38	3/8 NYLOK NUT ZINC	25
15	HWFLWA38	3/8" Flat Washer	18
16	HWHB38112	3/8-16 X 1 1/2 GR5 C/S ZINC HEX BOLT (1000)	9
17	HWTEX1034	#10 x 5/8 SELF TAPPING SCREW	52
18	CIFFRAMER	REAR F-FRAME PANEL SUPPORT	3
19	CIFFRAMES-RT	RIGHT F-FRAME PANEL SUPPORT	1
20	CIFRAMES-LT	LEFT F-FRAME PANEL SUPPORT	1
21	CIVBGRREAR OR VCIMESHPPANELREAR	RAILING LONG REAR PANEL	2
22	CIVBGRSIDE OR VCIMESHPPANELSIDE	RAILING SIDE PANEL	2
23	HWUB516112	5/16 x 1-1/2 x 2-11/16 U bolt	8
24	VCIPANELCLAMP138	1-3/8" X 1-3/8" PANEL CLAMP CLAMPS - PAIR	6
25	HWCB38214	3/8" -16 x 2-1/4" Carriage Bolt	6



Date: 4/28/2021

Rev: A

Drawn: JBN

Sheet: 2 of 16

PRODUCT NAME

**5 ROW DELUXE 15FT**

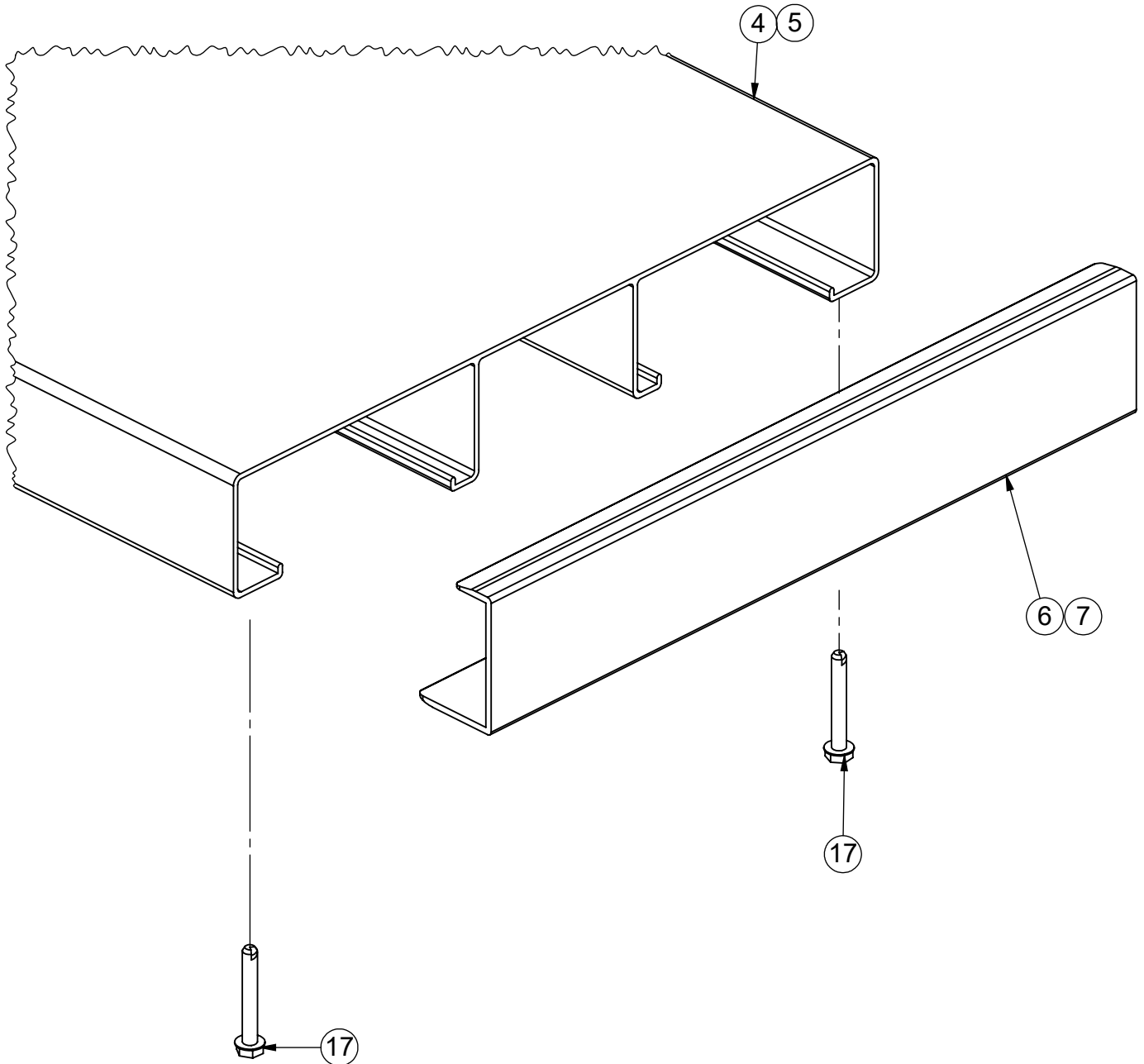
MODEL NO.

**1183-515**

## INSTALLATION INSTRUCTIONS:

1) Check materials received with the BOM to make sure that all components are included and to assure that the unit is complete.

2) Installing End Caps Item on Seat and Foot Planks: 2" x 12" & 2" x 10" end caps Item ⑥ ⑦ . Align and assemble all end caps to aluminum planks. Secure using #10 x 3/4" Item ⑪ self-tapping screw in two locations on the underside of the clip/plank.



Date: 4/28/2021

Rev: A

Drawn: JBN

Sheet: 3 of 16

PRODUCT NAME

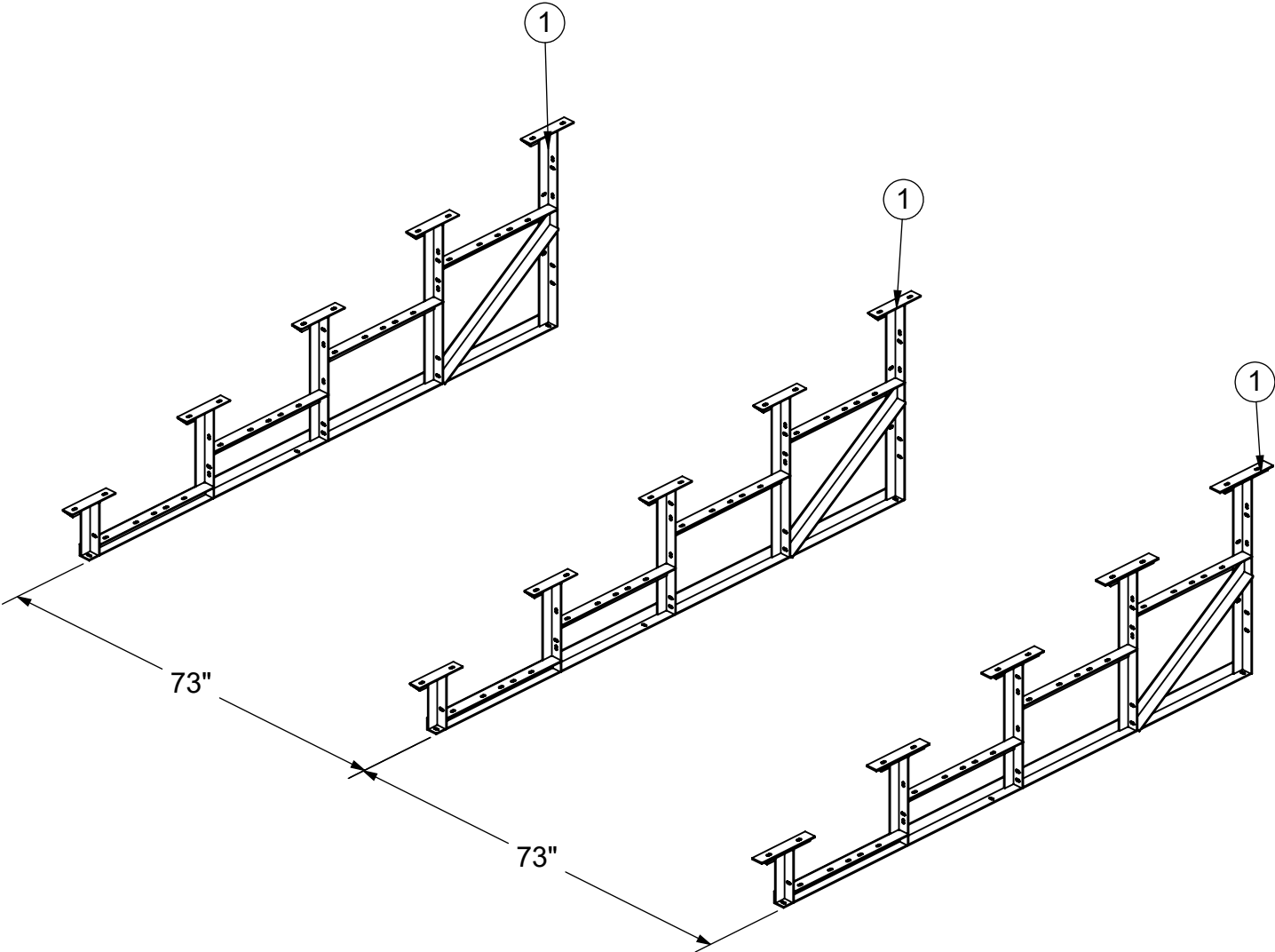
**5 ROW DELUXE 15FT**

MODEL NO.

**1183-515**

**INSTALLATION INSTRUCTIONS:**

3) Locate the three 5-Row Standard Frame Item ① and set on a level surface on 73" centers.



Date: 4/28/2021  
Rev: A  
Drawn: JBN  
Sheet: 4 of 16

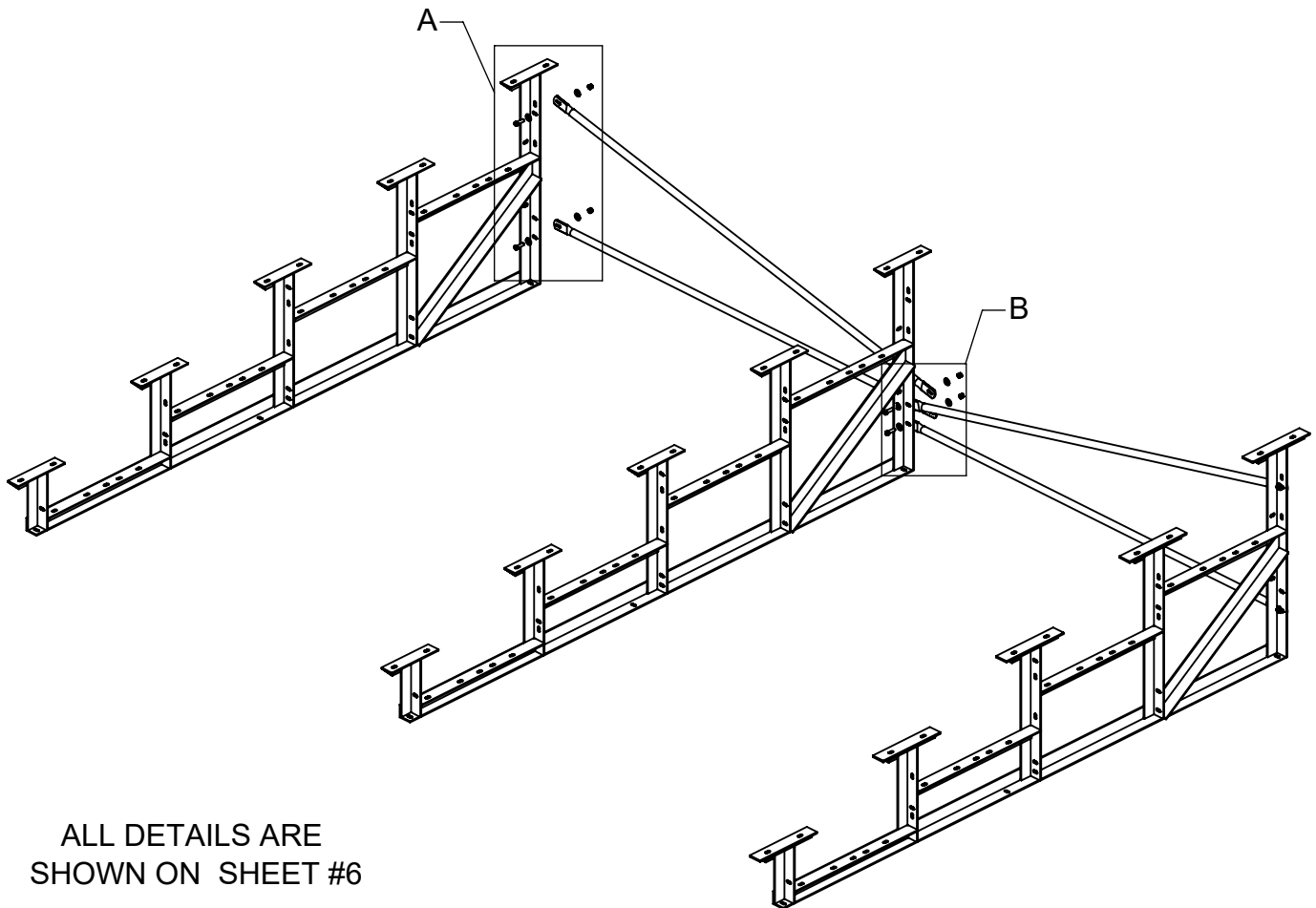
PRODUCT NAME  
**5 ROW DELUXE 15FT**  
MODEL NO.  
**1183-515**



## INSTALLATION INSTRUCTIONS:

4) To Install Cross Braces: a) Locate two sets of braces measuring 76-3/8" and 74-5/8" Item (3) (2) . Install on the backside of the Bleacher Frames using 3/8" x 1-1/2" Hex Bolt Item (16) , Washers Item (15) , and Lock Nut Item (14) provided using the top and bottom slots in the frame and center of Braces as shown. Repeat steps to assemble remaining sets of cross braces to the other bleacher frames. At all installation points, install washers and nuts but leave hardware loose until assembly is complete for easy installation.

NOTE: Two washers are provided to use at every hex bolt location.



ALL DETAILS ARE  
SHOWN ON SHEET #6



Date: 4/28/2021

Rev: A

Drawn: JBN

Sheet: 5 of 16

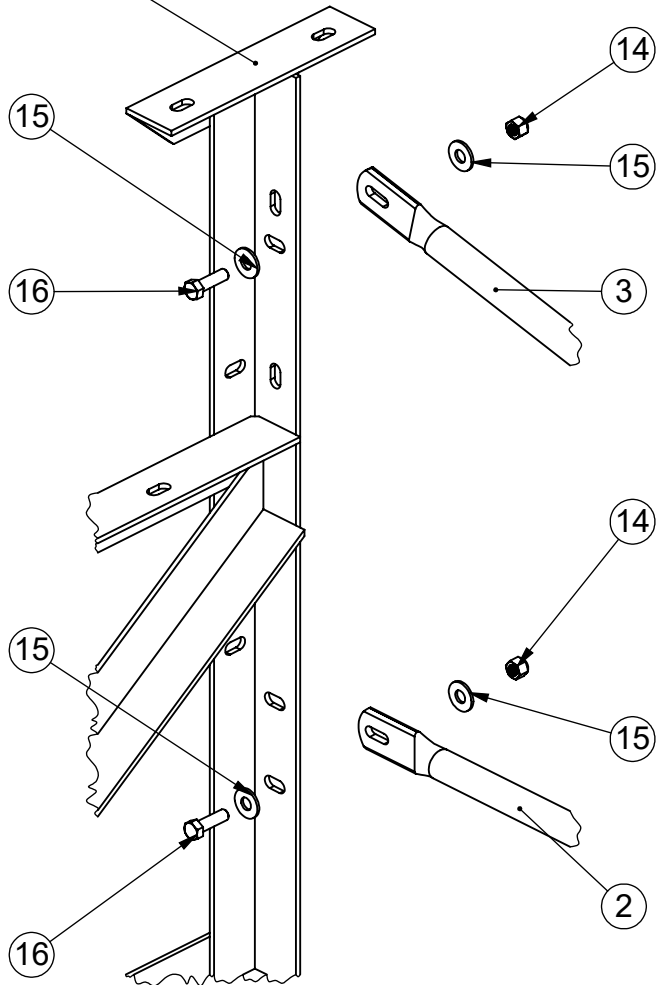
PRODUCT NAME

**5 ROW DELUXE 15FT**

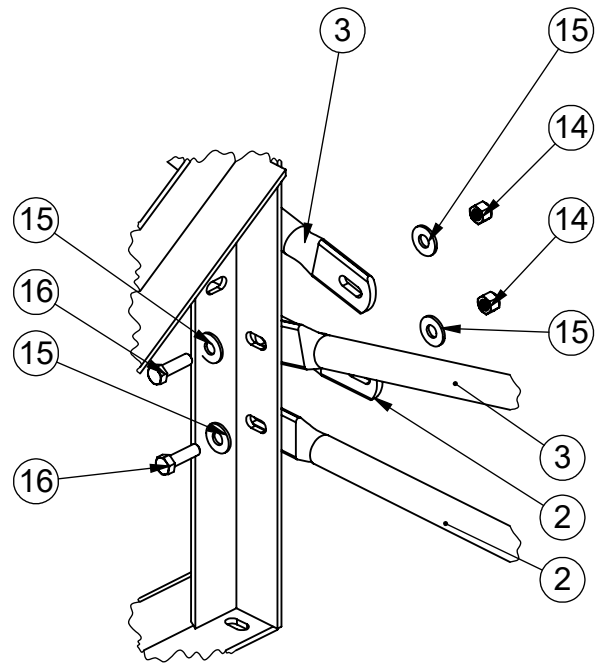
MODEL NO.

**1183-515**

BLEACHER  
FRAME



DETAIL A  
ENLARGED  
FROM SHEET #5  
SCALE 1 : 6



DETAIL B  
ENLARGED  
FROM SHEET #5  
SCALE 1 : 6



Date: 4/28/2021

Rev: A

Drawn: JBN

Sheet: 6 of 16

PRODUCT NAME

5 ROW DELUXE 15FT

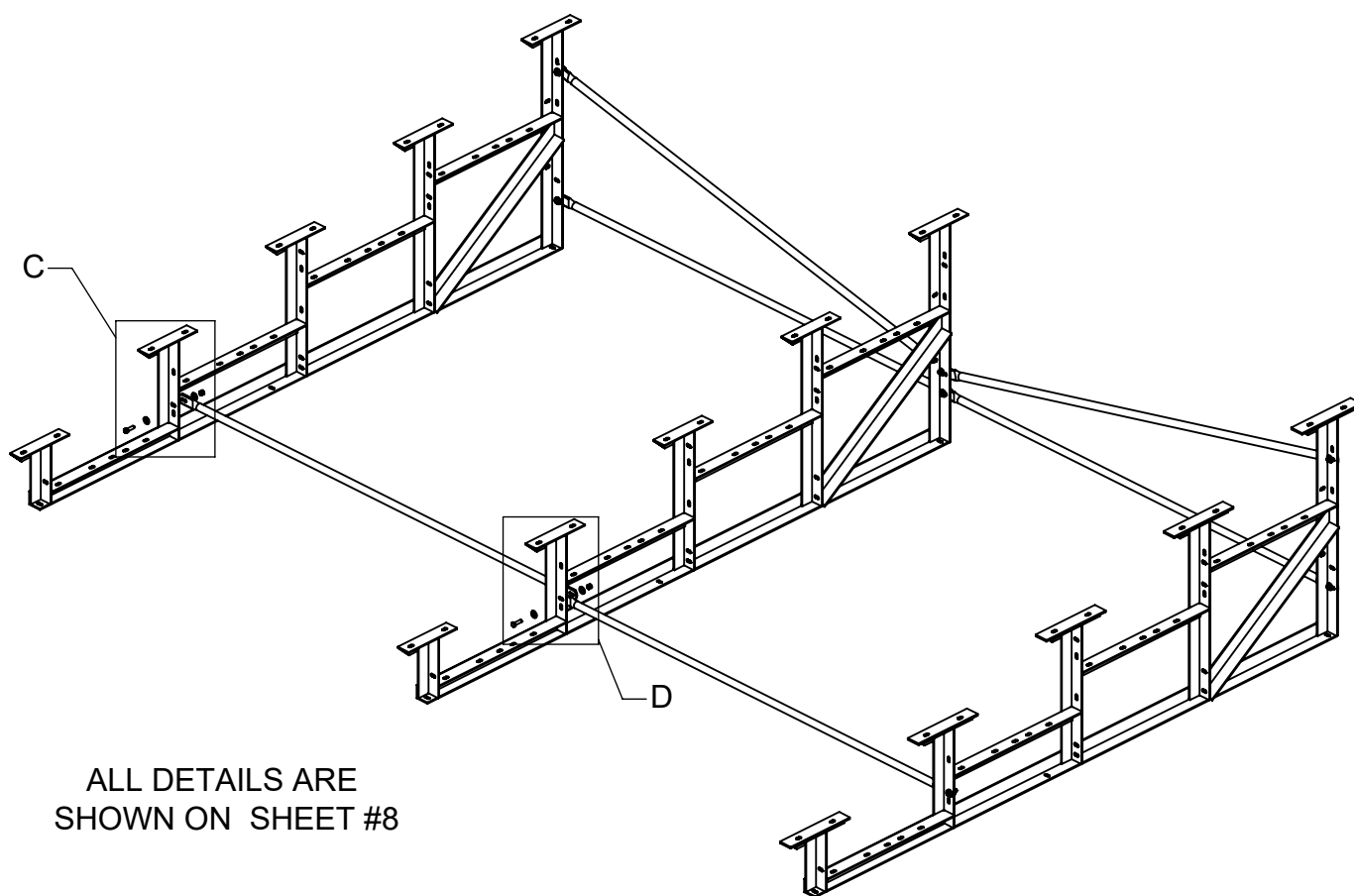
MODEL NO.

1183-515

## INSTALLATION INSTRUCTIONS:

5) To Install Cross Braces a) Locate two braces measuring 74-5/8" Item (2). Install on the backside of the second row of Bleacher Frames using 3/8" x 1-1/2" Hex Bolt Item (16), Washers Item (15), and lock nut Item (14) for the top, bottom slots and center between Braces. Repeat steps to assemble remaining sets of braces to the other bleacher frames. At all installation points, install washers and nuts but leave hardware loose until assembly is complete for easy installation.

NOTE: Two washers are provided to use at every hex bolt location.



ALL DETAILS ARE  
SHOWN ON SHEET #8



Date: 4/28/2021

Rev: A

Drawn: JBN

Sheet: 7 of 16

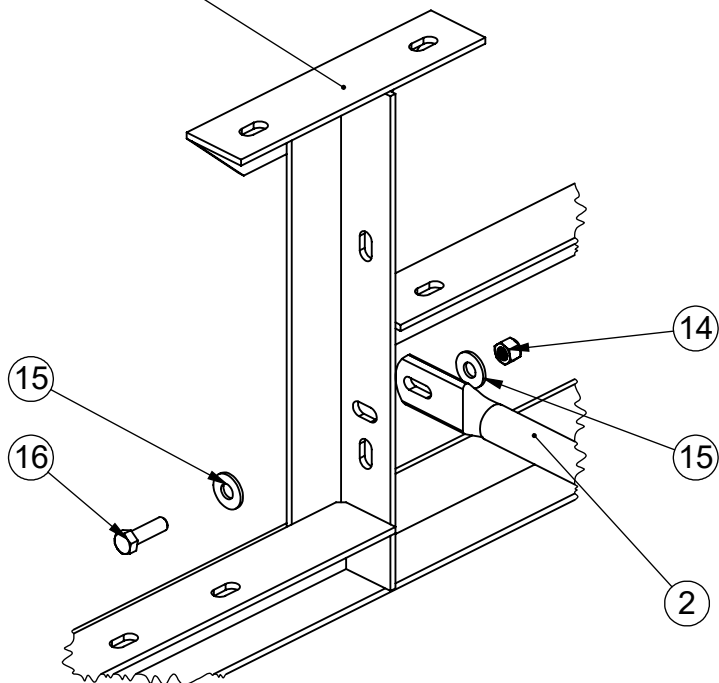
PRODUCT NAME

**5 ROW DELUXE 15FT**

MODEL NO.

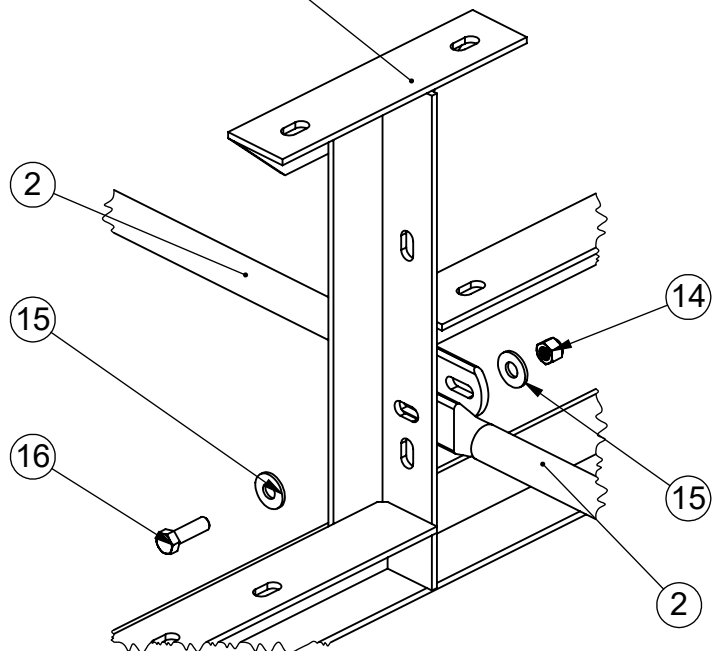
**1183-515**

BLEACHER  
FRAME



DETAIL C  
ENLARGED  
FROM SHEET #7  
SCALE 1 : 5

BLEACHER  
FRAME



DETAIL D  
ENLARGED  
FROM SHEET #7  
SCALE 1 : 5



Date: 4/28/2021

Rev: A

Drawn: JBN

Sheet: 8 of 16

PRODUCT NAME

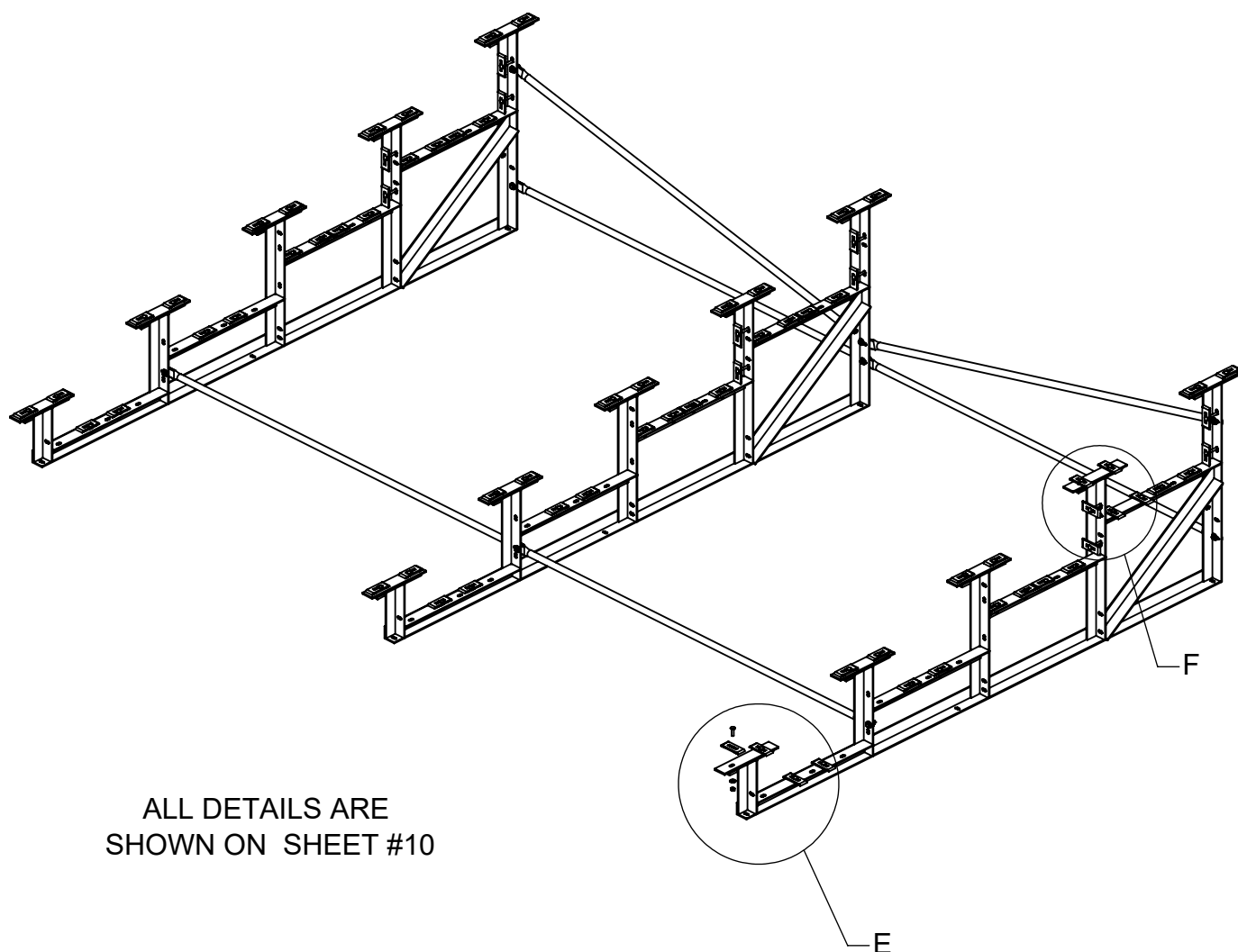
5 ROW DELUXE 15FT

MODEL NO.

1183-515

## INSTALLATION INSTRUCTIONS:

6) To Install Seat and Foot Planks: a) First place the deluxe seat adapter (9) on the seat uprights then install the Bolt Clip For 10" & 12" Aluminum Plank Item (8) using 5/16" x 1-1/4" carriage bolts Item (10), washer Item (12), and lock nuts (13) on top of the seat and foot board supports. To install clips for riser planks using 5/16" x 3" carriage bolts Item (11), washer Item (12), and lock nuts (13). Give nuts about 3/4 turn (just enough to secure). Turn Bolt Clips Item (8) perpendicular to the frames.



ALL DETAILS ARE  
SHOWN ON SHEET #10



Date: 4/28/2021

Rev: A

Drawn: JBN

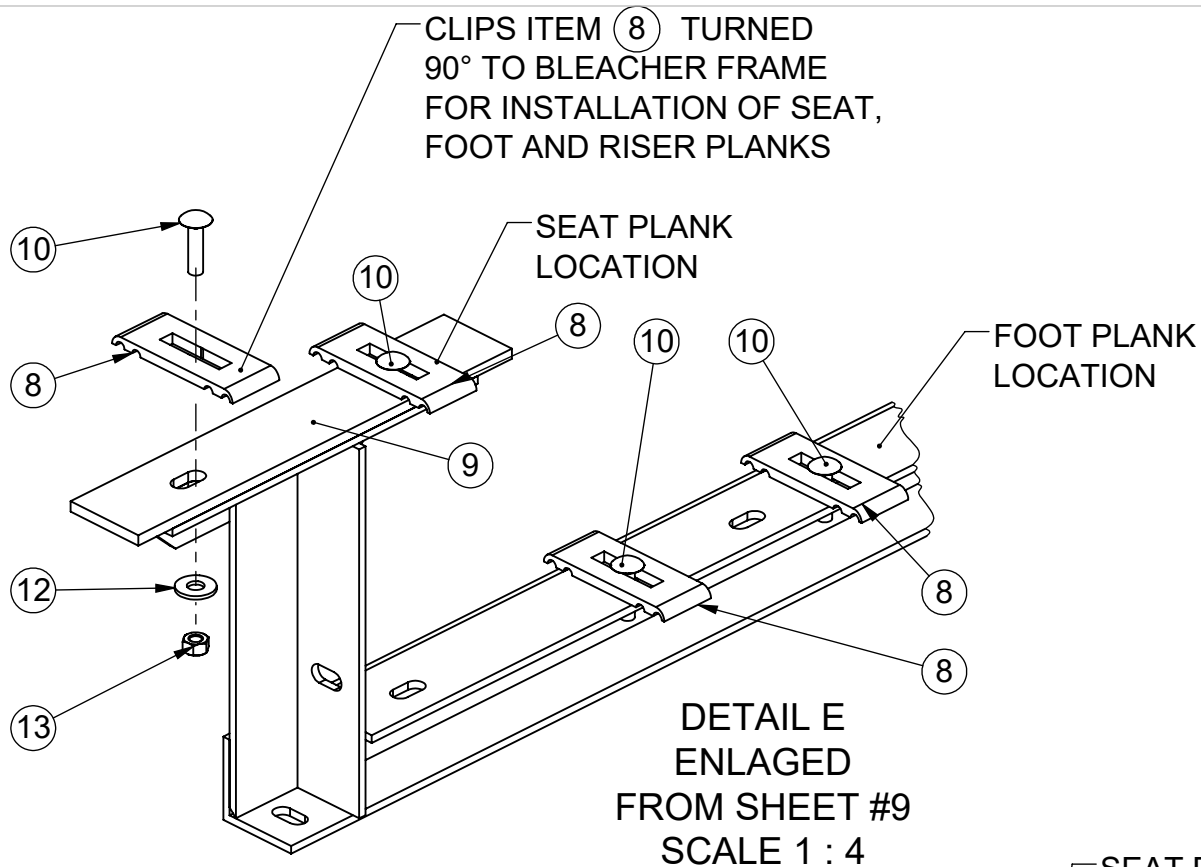
Sheet: 9 of 16

PRODUCT NAME

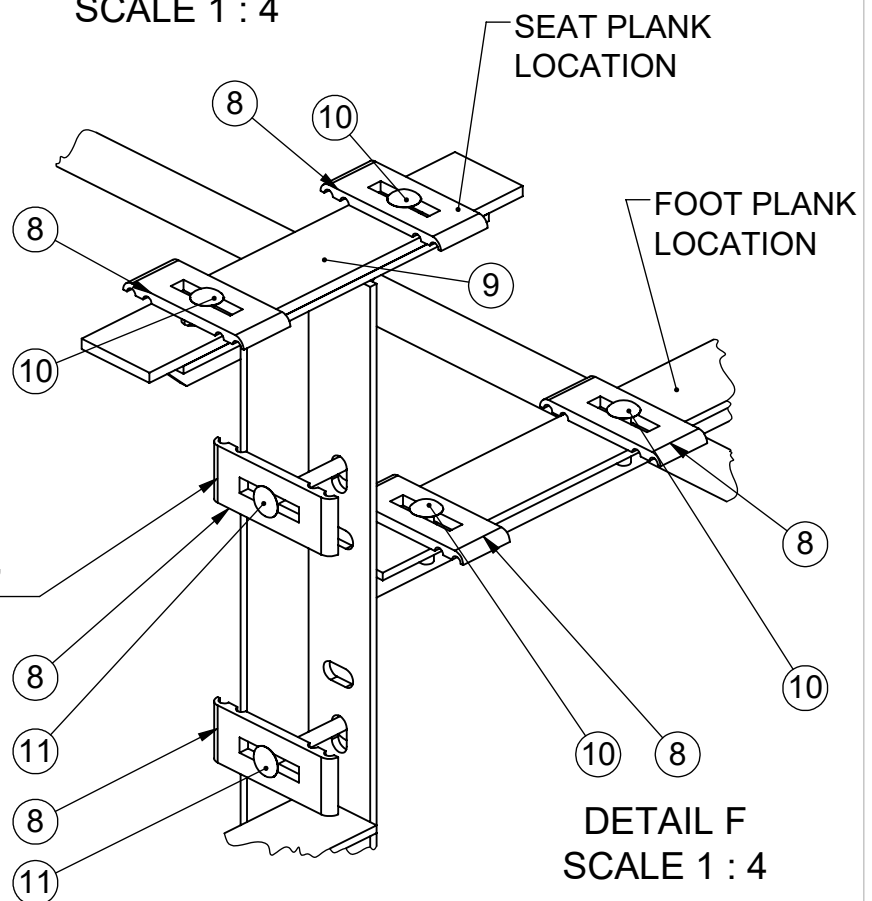
**5 ROW DELUXE 15FT**

MODEL NO.

**1183-515**



CLIPS ITEM (8) TURNED 90° TO BLEACHER FRAME FOR INSTALLATION OF SEAT, FOOT AND RISER PLANKS



Date: 4/28/2021

Rev: A

Drawn: JBN

Sheet: 10 of 16

PRODUCT NAME

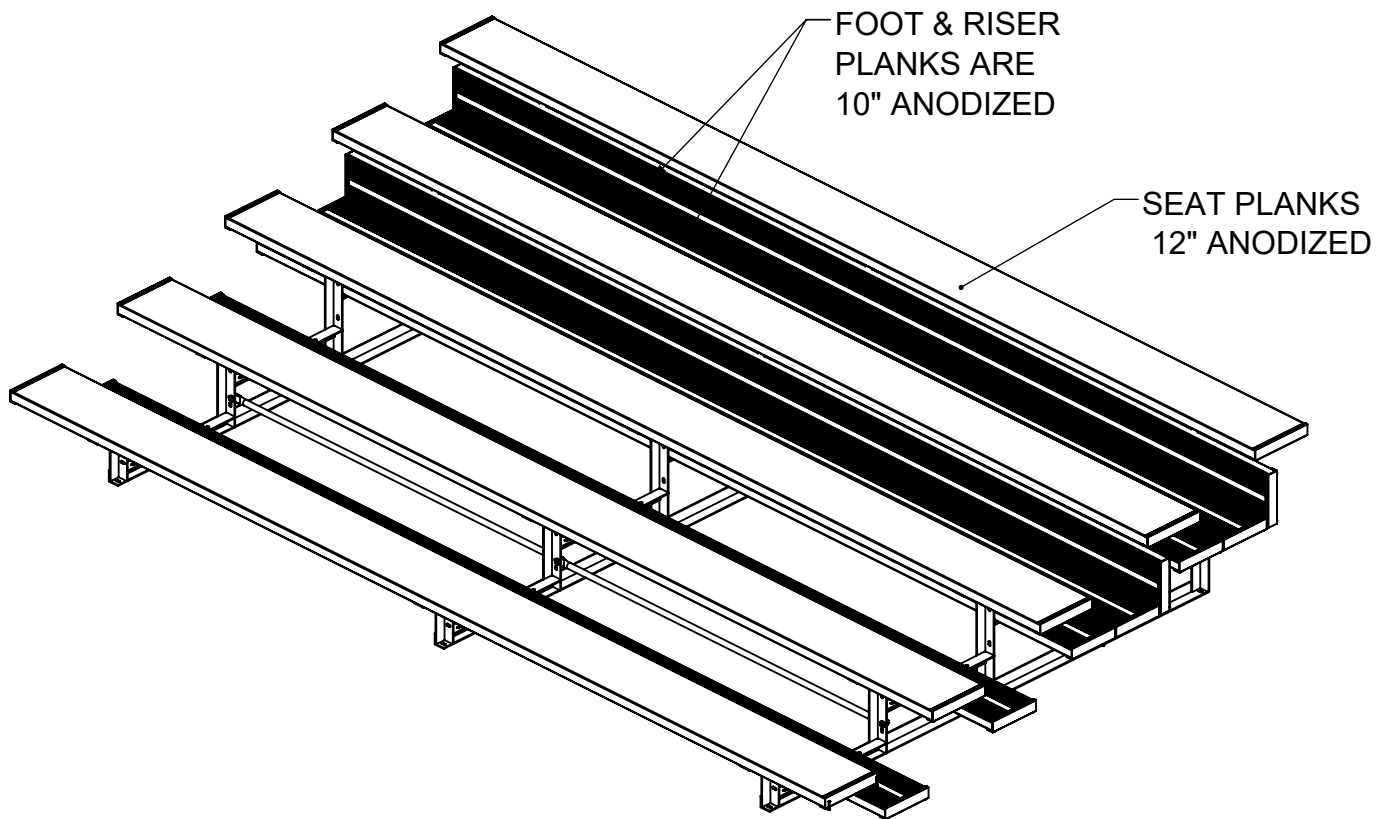
**5 ROW DELUXE 15FT**

MODEL NO.

**1183-515**

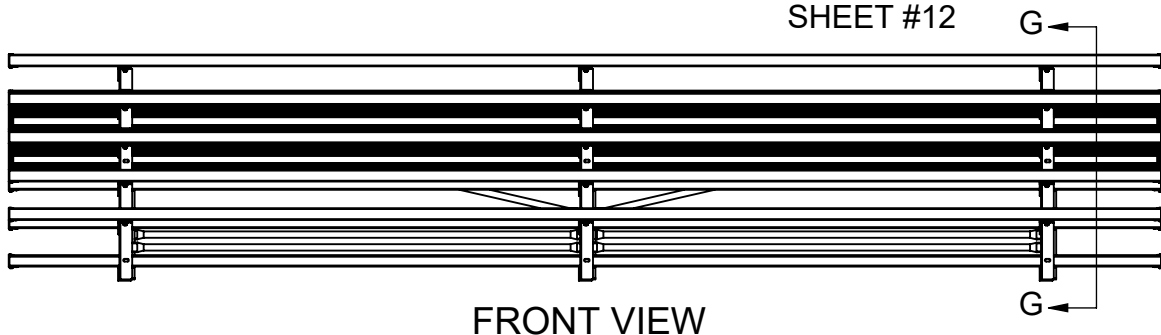
## INSTALLATION INSTRUCTIONS:

7) Position seat Planks, Foot Planks and Riser Planks on the supports so the Bolt Clips Item (8) are between the slots in the bottom of Planks. Reach up underneath the Seat Plank, Foot Plank, and Riser Plank to rotate the Bolt Clips Item (8) to 90° so they engage the planks. To Secure Planks to Frames: a) Align the end of the planks on rows so they are approximately 16" from outside edge of plank to center Seat frame Item (1). Tighten all hardware on frames and planks securely.



### SECTION G-G

SHOWN ON  
SHEET #12



FRONT VIEW



Date: 4/28/2021

Rev: A

Drawn: JBN

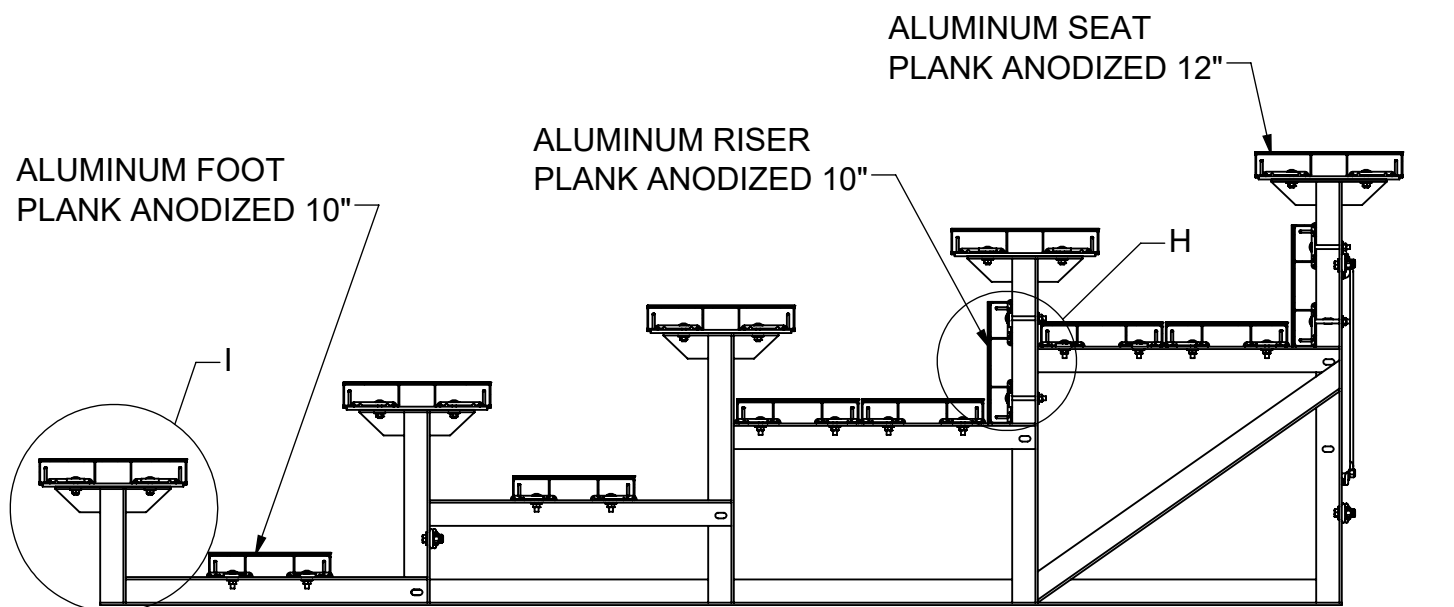
Sheet: 11 of 16

PRODUCT NAME

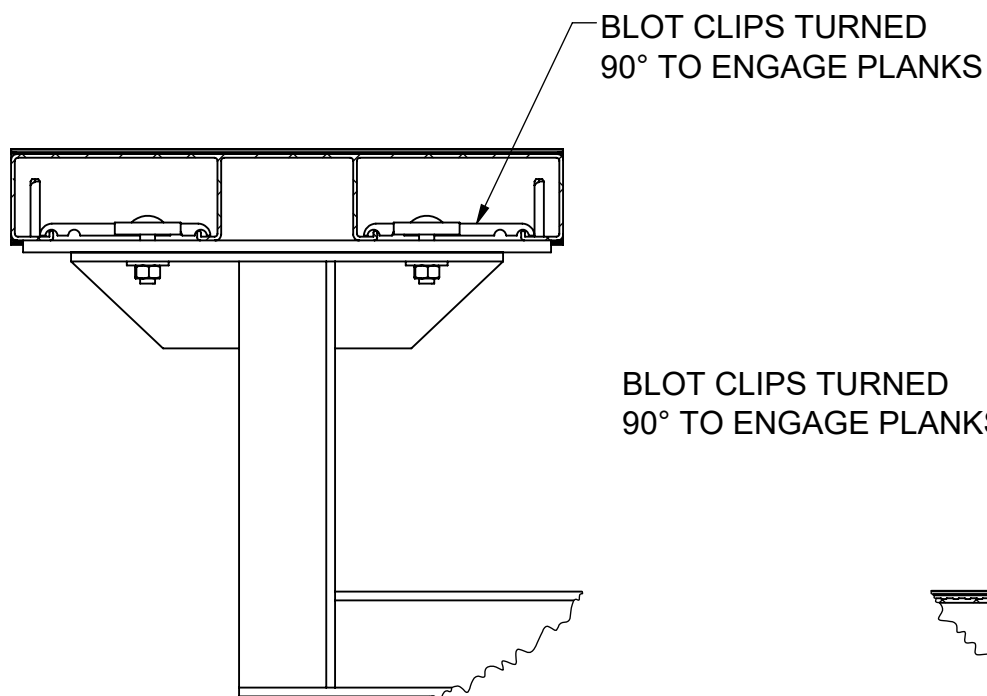
**5 ROW DELUXE 15FT**

MODEL NO.

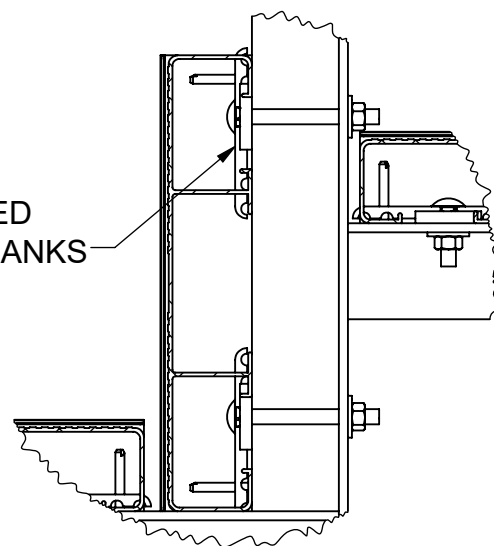
**1183-515**



SECTION G-G  
FROM SHEET #11  
SCALE 1 : 15



DETAIL I  
ENLARGED  
SCALE 1 : 4



DETAIL H  
ENLARGED  
SCALE 1 : 4



Date: 4/28/2021

Rev: A

Drawn: JBN

Sheet: 12 of 16

PRODUCT NAME

5 ROW DELUXE 15FT

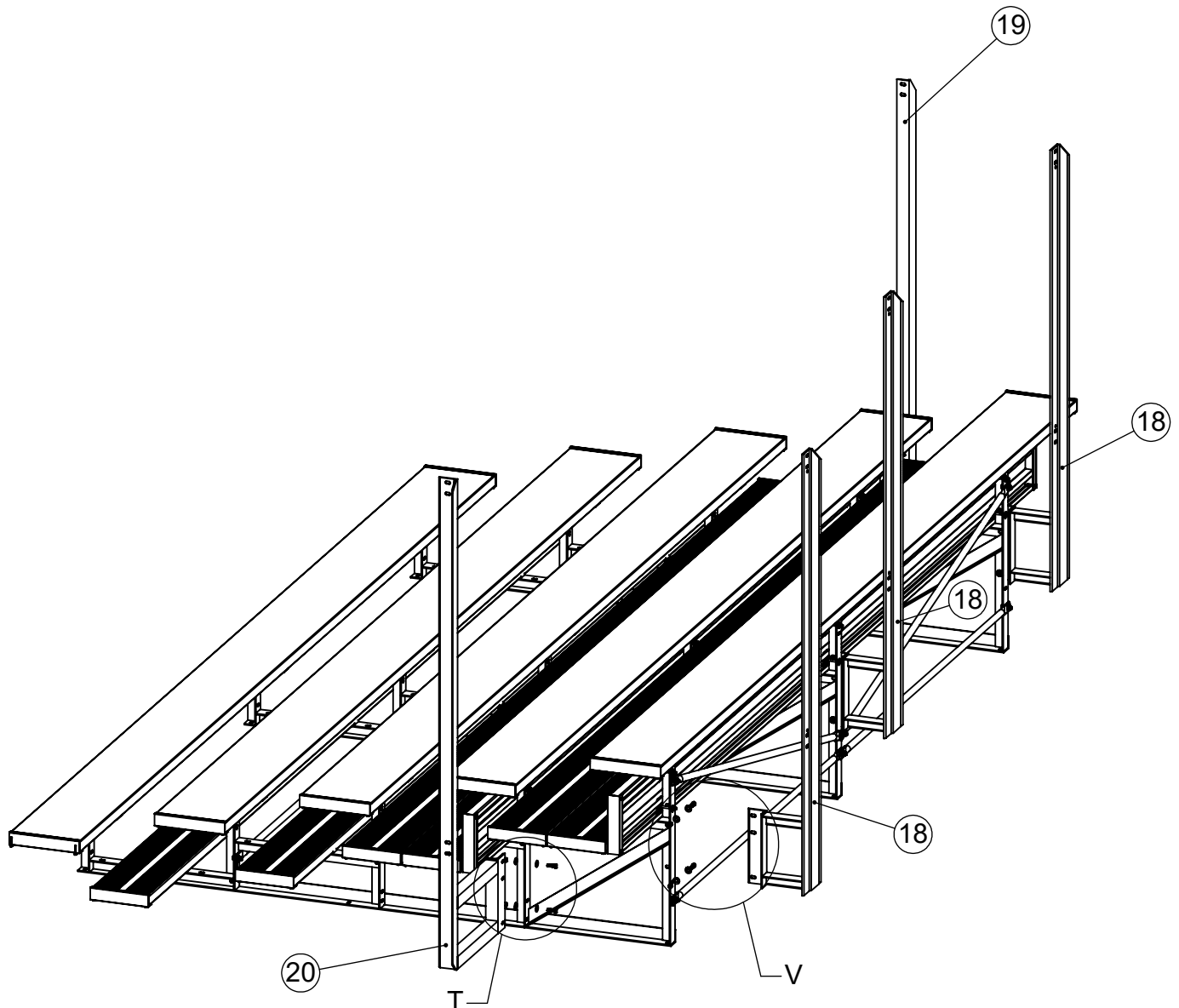
MODEL NO.

1183-515



## INSTALLATION INSTRUCTIONS:

8) Install Right, Left and Rear F-Frame Panel Support Items (19) (20) (18) . Attach to Bleacher Frames with 3/8" x 1-1/2" hex bolts Item (16) , washers Item (15) and lock nuts Item (14) .



Date: 4/28/2021

Rev: A

Drawn: JBN

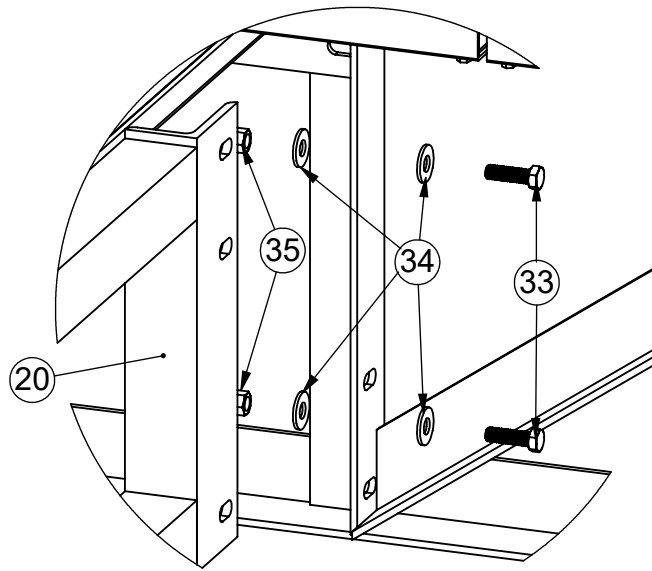
Sheet: 13 of 16

PRODUCT NAME

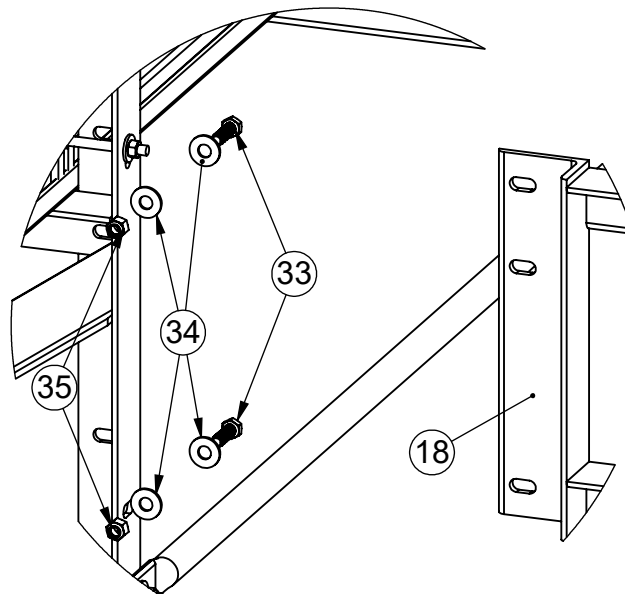
**5 ROW DELUXE 15FT**

MODEL NO.

**1183-515**



**DETAIL-T**  
FROM SHEET #13



**DETAIL-V**  
FROM SHEET #13



Date: 4/28/2021

Rev: A

Drawn: JBN

Sheet: 14 of 16

**PRODUCT NAME**

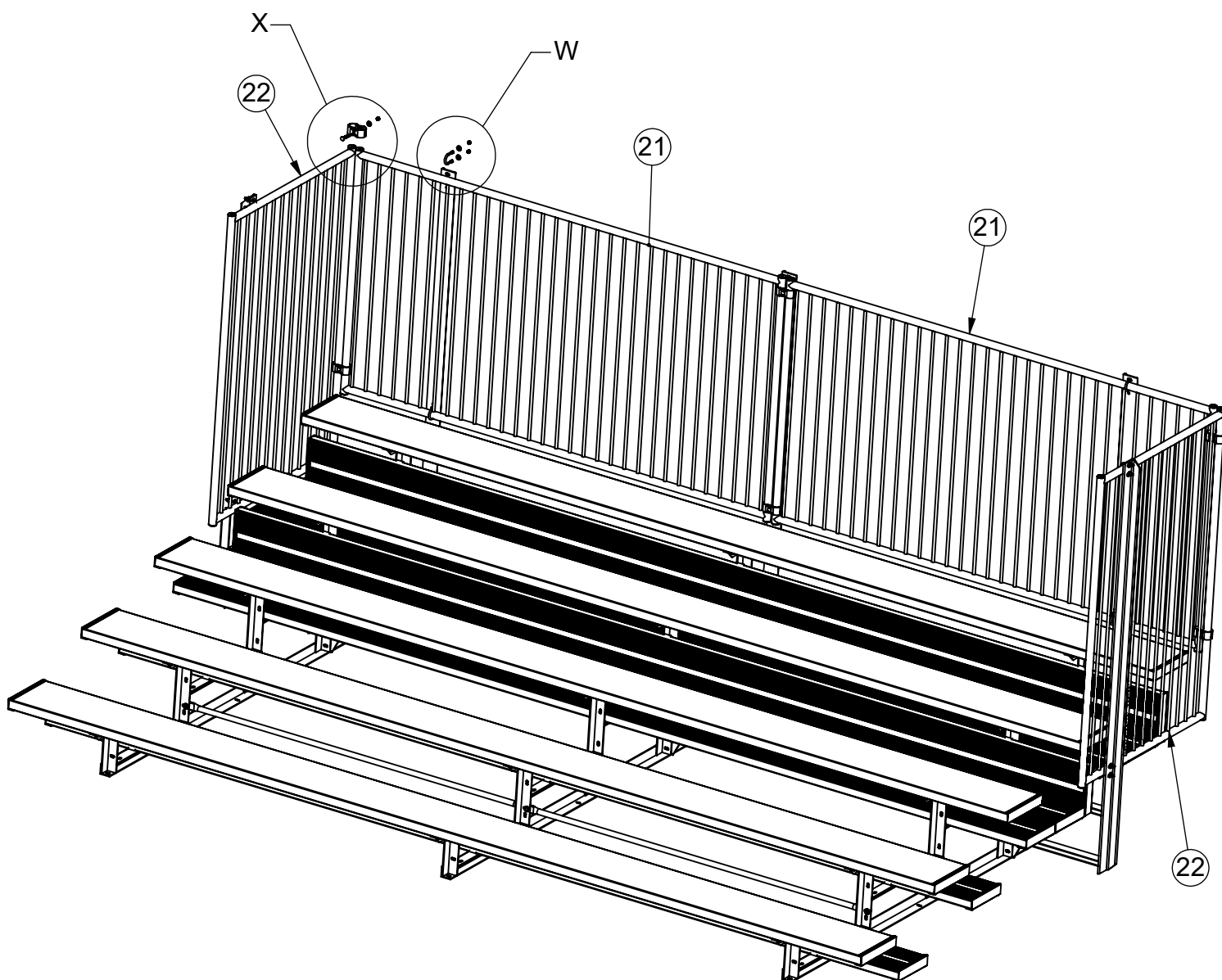
**5 ROW DELUXE 15FT**

MODEL NO.

**1183-515**

## INSTALLATION INSTRUCTIONS:

9) Install Railing Side and Rear Panels Items (21) (22) . Attach Railing Side Panel Item (21) to Left F-Frame Panel Support Item (20) with 5/16" U-Bolt Item (23) ,washers Item (12) and lock nuts Item (13) Attach Railing Rear Long Panel Item (22) to Rear F-Frame Panel Support Item (18) using 5/16" U-Bolt Item (23) ,washers Item (12) ,lock nuts Item (13) , Panel Clamp Item (24) , 3/8" x 2-1/2" Carriage bolts Item (25) , washers Item (15) and lock nuts Item (14) . Repeat with the rest of the Railing Panels.



Date: 4/28/2021

Rev: A

Drawn: JBN

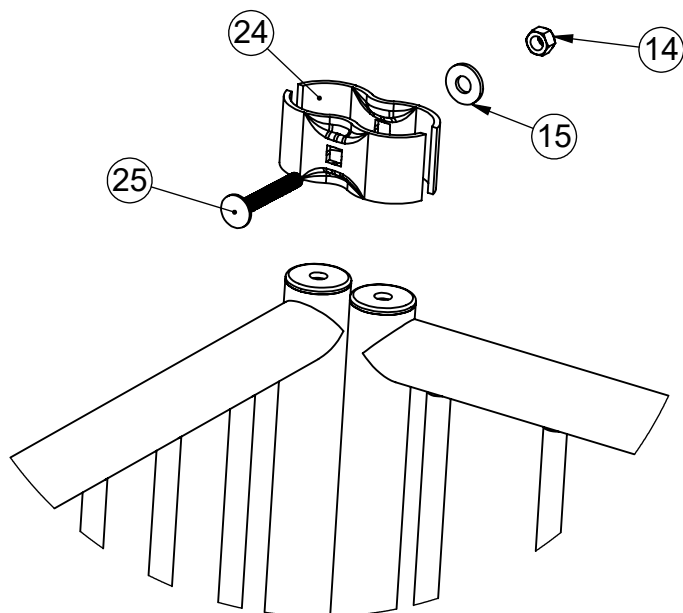
Sheet: 15 of 16

PRODUCT NAME

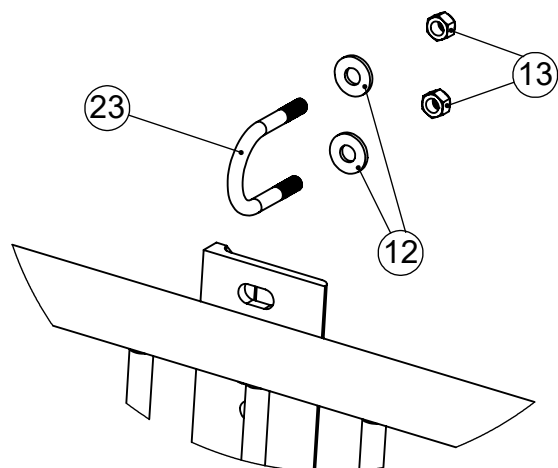
**5 ROW DELUXE 15FT**

MODEL NO.

**1183-515**



DETAIL X  
SCALE 1 : 4



DETAIL W  
SCALE 1 : 4

## INSTALLATION INSTRUCTIONS:

10) Installing (Optional) Ground Sills (wood measuring 2" x 6" x 96"): a) Center one ground sill under each bleacher frame so the ends are evenly spaced and are centered from side to side. Mark the (4) hole locations in each bleacher frame on each of the ground sills and drill 1/4" x 1" deep pilot holes. DO NOT drill completely through the ground sills. b) Attach the ground sills to the bottom of the bleacher frames with 5/16" x 1-1/4" lag bolts and flat washers provided.



Date: 4/28/2021

Rev: A

Drawn: JBN

Sheet: 16 of 16

PRODUCT NAME

5 ROW DELUXE 15FT

MODEL NO.

1183-515