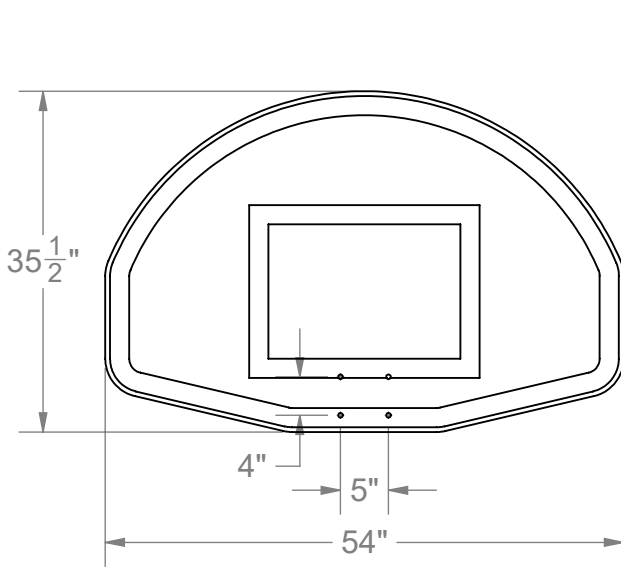


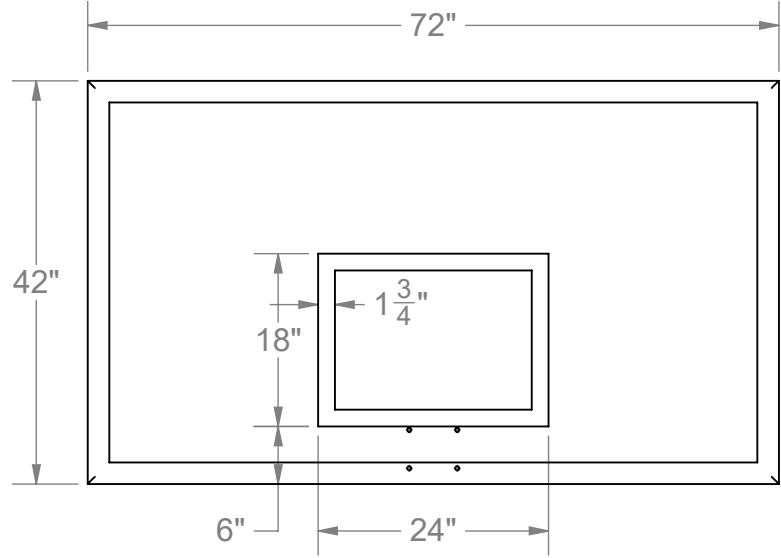
# BASKETBALL BACKBOARD

**MODEL #18** 1-1/2" FIBERGLASS FAN, WHITE (49 LBS)

**MODEL #20** 1-1/2" FIBERGLASS RECTANGLE, WHITE (103 LBS)



**#18 FAN Backboard**



**#20 Rectangle Backboard**

## GENERAL:

*These heavy-duty backboards are designed for outdoor use. Backboards are available in fan-shaped or rectangular-shaped boards. Backboards are fabricated from fiberglass.*

## MATERIALS:

*Fiberglass Fan: Model #18 is a molded fiberglass skin.*

*Support and goal attachment areas are reinforced with a solid wood and polyester core. Backboard is finished with a stark-white, high gloss gel coat.*


*Fiberglass Rectangle: Model #20 is a molded fiberglass skin.*

*Support and goal attachment areas are reinforced with a solid wood and polyester core. Backboard is finished with a stark-white, high gloss gel coat.*

*These basketball backboards are designed for outdoor exposure as they are unaffected by moisture.*

*For installation of backboards to PW Athletic posts ONLY. For other manufacturer's posts and backboards, please consult installation instructions provided by that manufacturer.*

**WARRANTY PERIOD:** Limited Lifetime Warranty

	Date: 4/8/15	<b>SPECIFICATION / INSTALLATION INSTRUCTIONS</b> FIBERGLASS BACKBOARD WITH TARGET AND PERIMETER
	Rev: 12/12/22	
	Drawn: SS	MODEL NO.
	Sheet: 1 of 4	<b>18 &amp; 20</b>

Model #18 and #20 backboards are equipped with a 4-hole mounting pattern. These four holes will align with the goal ring and the post mounting plate. Model #18 also is equipped with two nut inserts on the back of the board for installation of diagonal braces. Model #20 is equipped with four nut inserts on the back of the board.

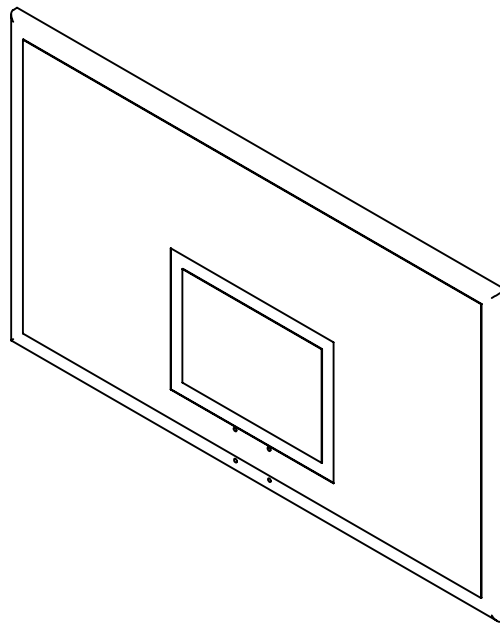
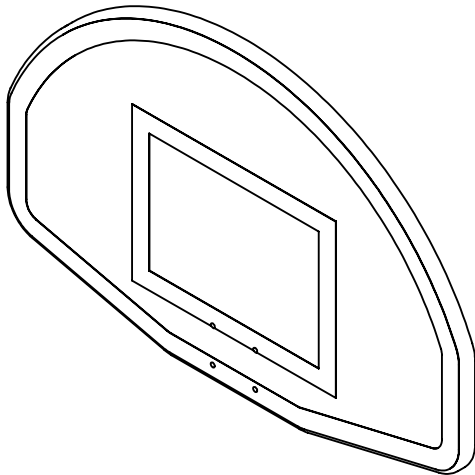
**NOTE:** The Rim and Backboard are to be mounted securely to the sleeve adapter (GNP). Attach the sleeve to the Post and secure with set screw and two drive pins.

1. Align the Rim with the holes on the Backboard and mounting plate and attach with 3/8" x 3-1/2" Hex Head bolts, Flat Washers and Nylock Nuts.
2. Attach Assembled Rim/Backboard/Sleeve to Post.
3. Adjust backboard to square and tighten all bolts.

**Caution:** Flat washers must be used behind the plate when mounting backboard.

Diagonal Brace Installation: Diagonal brace installation varies depending on which upright post is ordered. Consult post installation instructions.

Plumb the backboard and goal ring true and level (shim if necessary). Tighten all hardware securely. Install net. If the goal ring is equipped with a chain net, make sure all the S-hooks are fully closed.



**MODEL #18 BACKBOARD**

**MODEL #20 BACKBOARD**

STANDARD HARDWARE KIT FOR USE ON ALL BACKBOARD INSTALLATIONS	Qty
3/8-16 x 3-1/2" GR5 Fully Threaded Hex Bolt Zinc	4
3/8-16 x 1" GR5 C/S Zinc Hex Bolt (Cap Screw)	2
3/8-16 x 2" Flat Head Socket Cap Screw 18.8 SS	7
3/8" USS Flat Washer Zinc	15
3/8-16 Insert Nylock Zinc (2500)	11

STANDARD HARDWARE KIT FOR USE ON #20 BACKBOARD INSTALLATION	Qty
3/8-16 x 3-1/2" GR5 Fully Threaded Hex Bolt Zinc	4
3/8-16 x 1" GR5 C/S Zinc Hex Bolt (Cap Screw)	2
3/8-16 x 2" Flat Head Socket Cap Screw 18.8 SS	7
3/8" USS Flat Washer Zinc	15
3/8-16 Insert Nylock Zinc (2500)	11
Backboard Brace 46"	1
Backboard Brace 47"	1



Date: 4/8/15  
 Rev: 12/12/22  
 Drawn: SS  
 Sheet: 2 of 4

**SPECIFICATION / INSTALLATION INSTRUCTIONS**

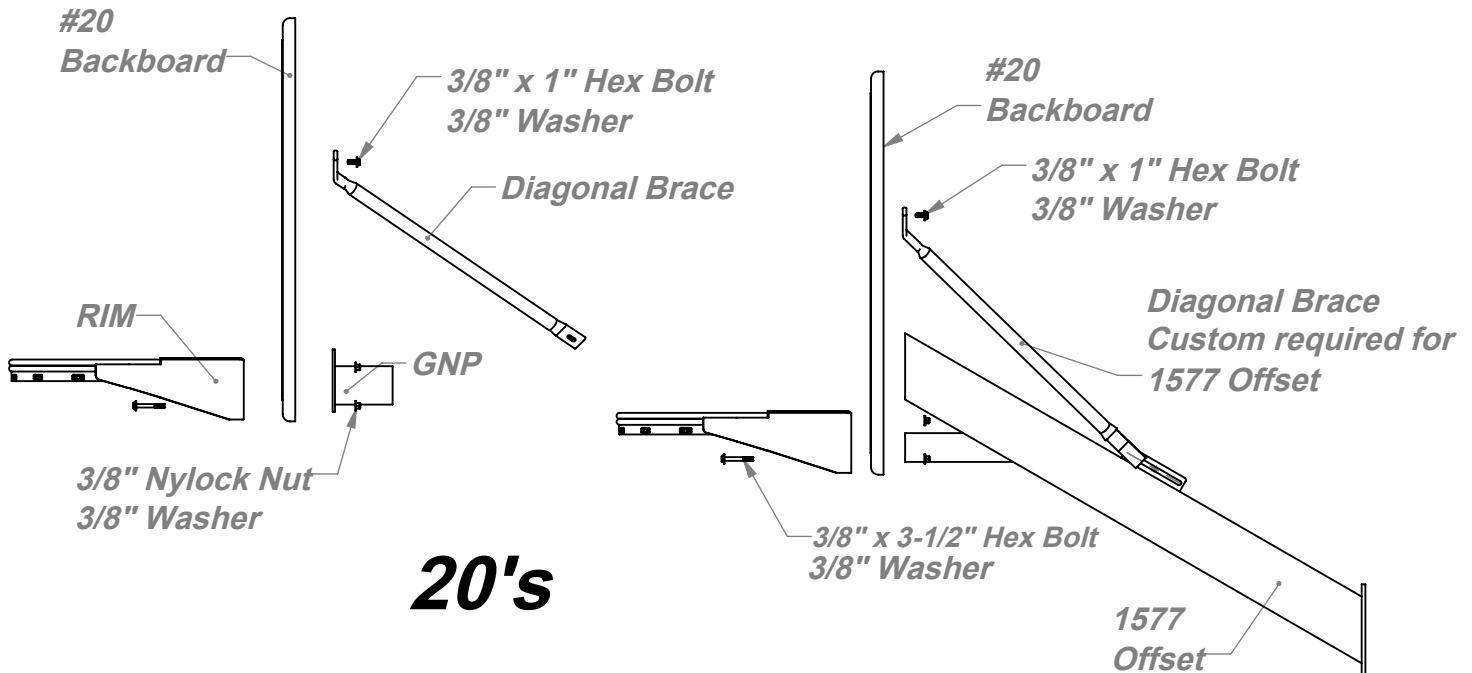
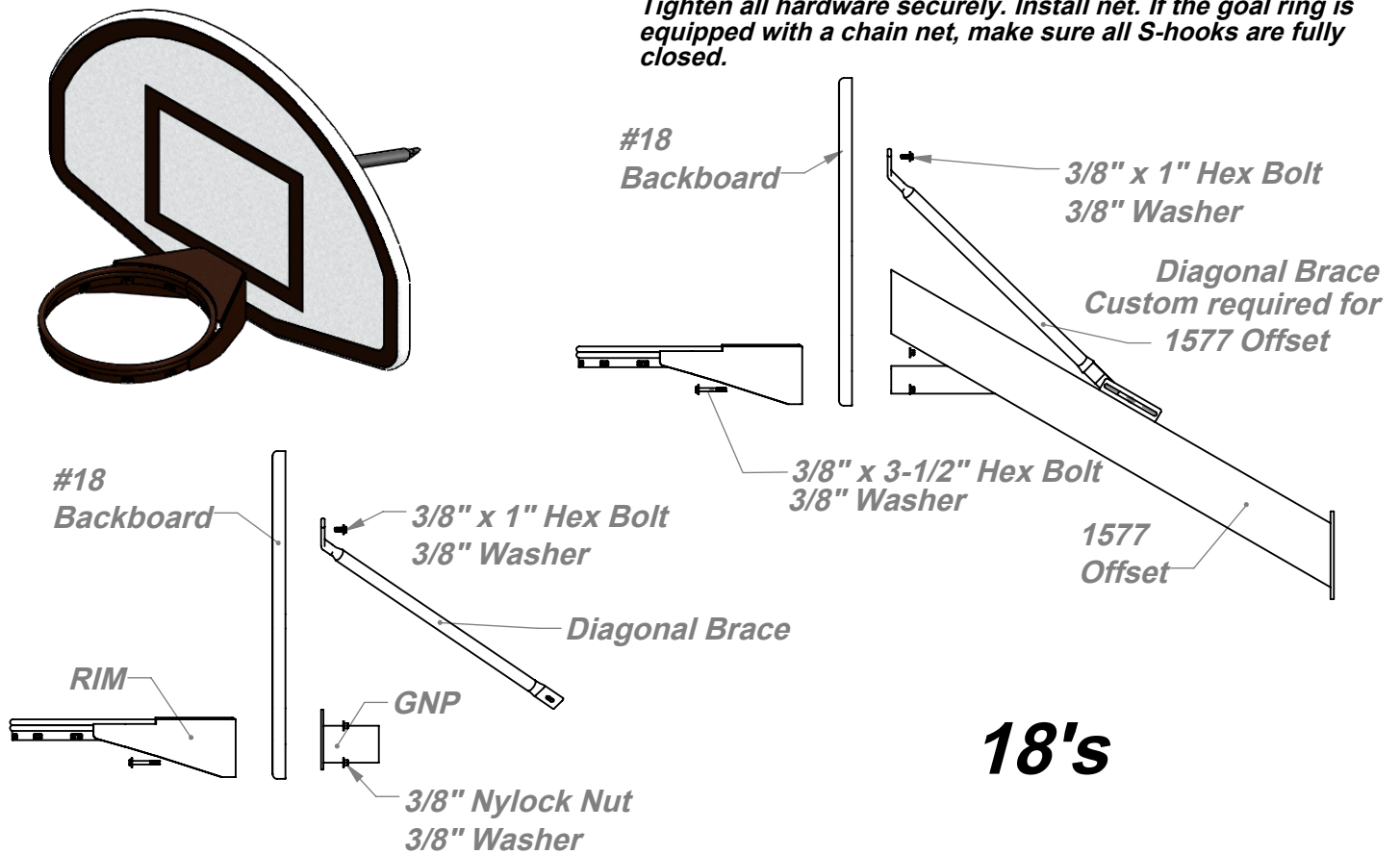
FIBERGLASS BACKBOARD WITH TARGET AND PERIMETER

MODEL NO.

**18 & 20**

# BASKETBALL BACKBOARD

**Diagonal Brace Installation:** Diagonal brace installation varies depending on which upright post is ordered. Plumb backboard and goal ring true and level (shim if necessary). Tighten all hardware securely. Install net. If the goal ring is equipped with a chain net, make sure all S-hooks are fully closed.



Date: 4/8/15  
 Rev: 12/12/22  
 Drawn: MT  
 Sheet: 3 of 4

## **SPECIFICATION / INSTALLATION INSTRUCTIONS**

*FIBERGLASS BACKBOARD WITH TARGET AND PERIMETER*

MODEL NO.

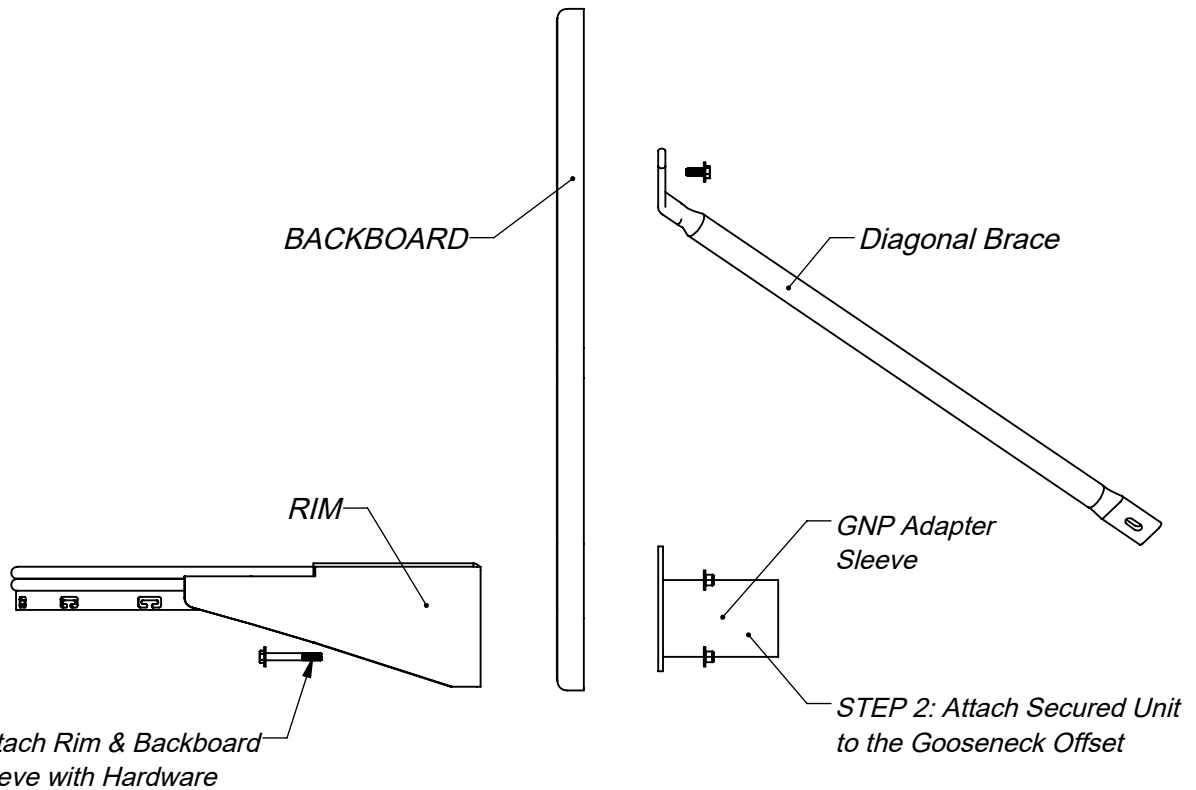
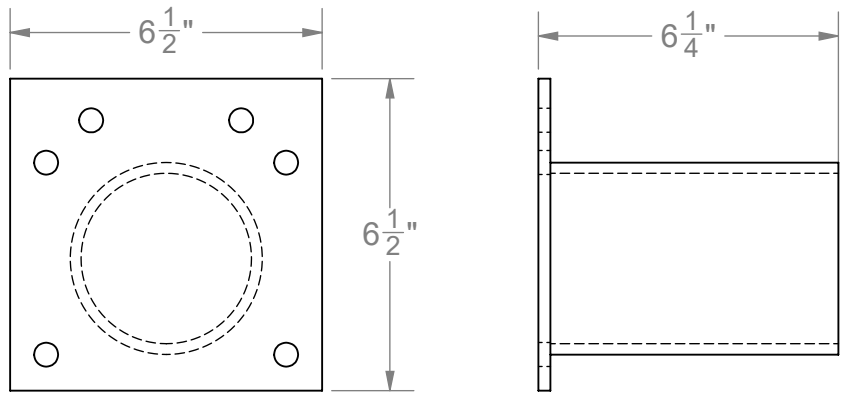
**18 & 20**

# **BACKBOARD GNP**

**NOTE:** Sleeves supplied with PW Goosneck Post ONLY

<b>Post Size</b>	<b>Sleeve Size</b>
3.5"	3"
4.5"	4"
5.563"	5"
6.625"	6"

**ONCE THE UNIT IS SECURE TO THE GOOSENECK, TIGHTEN SET SCREW AND SECURE WITH DRIVE PINS**



Date: 4/8/15  
 Rev: 12/12/22  
 Drawn: MT  
 Sheet: 4 of 4

**SPECIFICATION / INSTALLATION INSTRUCTIONS**  
 FIBERGLASS BACKBOARD WITH TARGET AND PERIMETER  
 MODEL NO.  
**18 & 20**