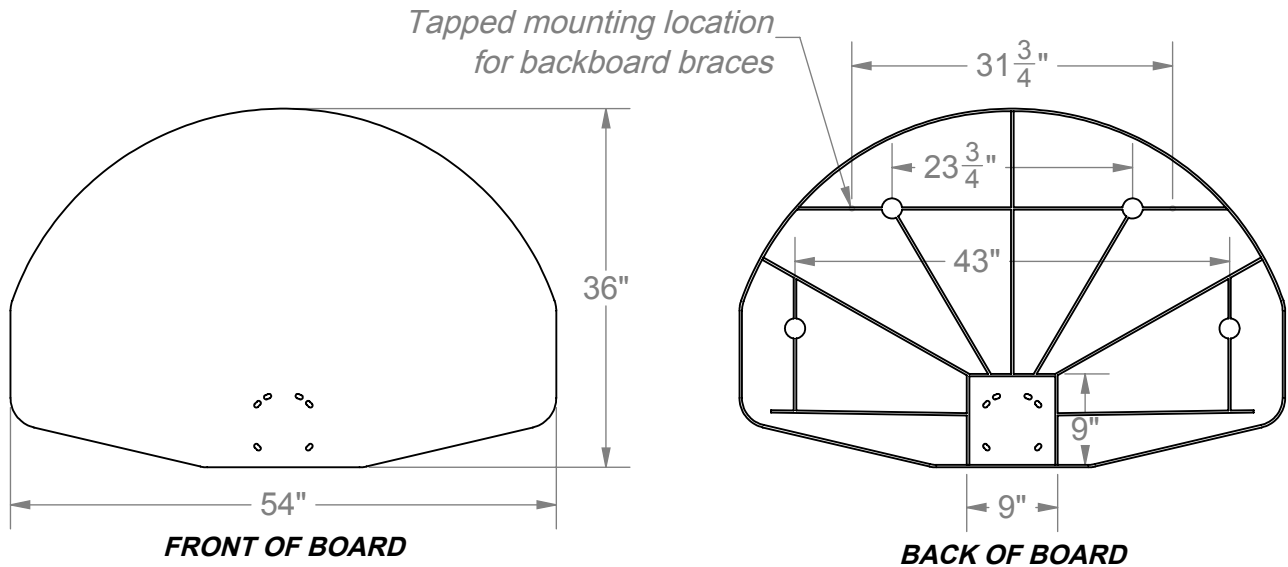


BASKETBALL BACKBOARD

MODEL #22 HEAVY DUTY CAST ALUMINUM POWDER COATED WHITE (50 LBS)



Instructions for installation of backboards to PW Athletic posts ONLY. For other manufacturer's posts and backboards, please consult installation instructions provided by that manufacturer.

MATERIALS:

Aluminum Backboard: #22 is a one-piece permanent mold of 3/16" thick minimum cast aluminum alloy with 1-1/2" deep perimeter flange and reinforcing ribs. Tapped mounting holes and goal ring holes are also heavily reinforced. Edges are rounded and casting has a smooth finish. Finish is semi-gloss, powder coated white.

Warranty Period: Limited Lifetime Warranty

NOTE: Rim and Backboard to be mounted securely to sleeve adapter (GNP). Attach sleeve to Post and secure with set screws and drive pin.

1. Align the Rim with the holes on the Backboard and mounting plate and attach with 3/8" x 3-1/2" Hex Head bolts, Flat Washers and Nylock Nuts.
2. Attach the Assembled Rim/Backboard/Sleeve to the Gooseneck Post.
3. For **Adjustable Offset Goals**, attach the Rim and Backboard with supplied hardware to the adjustable offset. Use the other half clamp and attach the assembly to the bottom of the post. Once all hardware is snug, slide the assembly up the post to the desired height.

CAUTION: Flat washers must be used behind plate when mounting backboard.

4. Adjust the Rim/Top assembled unit to be square and tighten all bolts.

NOTE: Hardware comes separately with each item (i.e. rim, backboard, and post)

COMPONENT DESCRIPTION	Qty
3/8-16 x 3-1/2" GR5 Fully Threaded Hex Bolt Zinc	4
3/8-16 x 1" GR5 C/S Zinc Hex Bolt (Cap Screw)	2
3/8-16 x 2" Flat Head Socket Cap Screw 18.8 SS	7
3/8" USS Flat Washer Zinc	15
3/8-16 Insert Nylock Zinc (2500)	11

FOR USE ON MODEL 1576 & 1577	Qty
3/8-16 x 3-1/2" GR5 Fully Threaded Hex Bolt Zinc	4
3/8-16 x 1" GR5 C/S Zinc Hex Bolt (Cap Screw)	2
3/8-16 x 2" Flat Head Socket Cap Screw 18.8 SS	7
3/8" USS Flat Washer Zinc	15
3/8-16 Insert Nylock Zinc (2500)	11
3/4" Backboard Spacer	1



Date: 4/8/15
 Rev: 12/6/22
 Drawn: MT
 Sheet: 1 of 3

SPECIFICATION / INSTALLATION INSTRUCTIONS

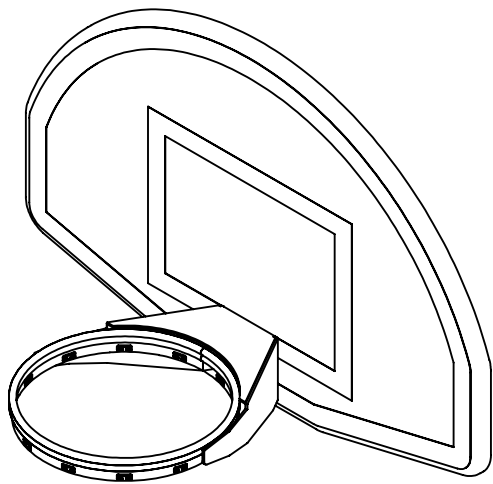
ALUMINUM "FAN" BASKETBALL BACKBOARD

MODEL NO.

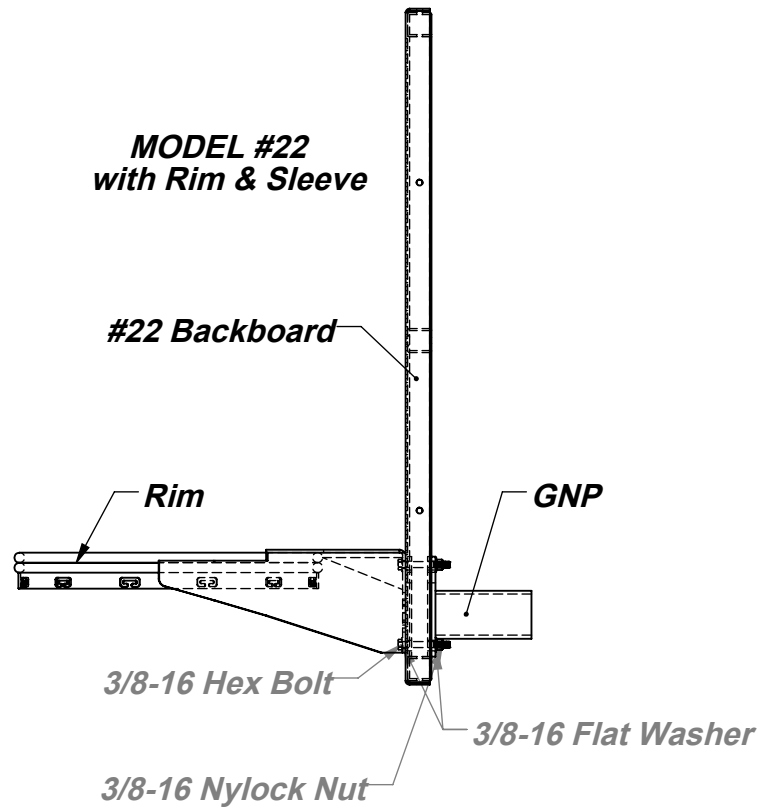
22

BASKETBALL BACKBOARD

MODEL #22 HEAVY DUTY CAST ALUMINUM POWDER COATED WHITE (50 LBS)

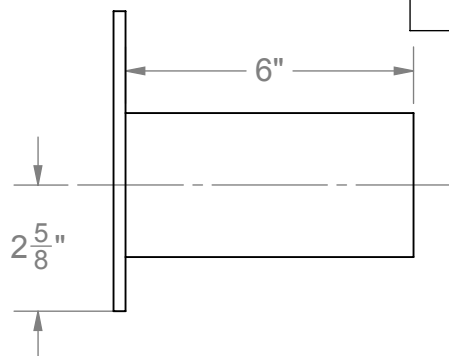
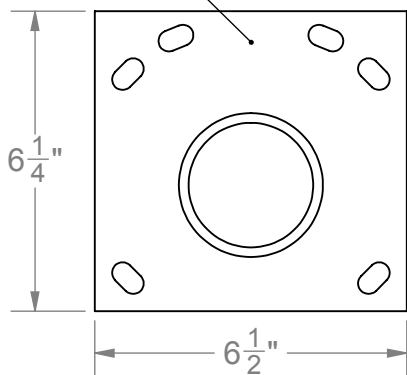


**MODEL #22
with Rim & Sleeve**



NOTE: Sleeves supplied with PW Gooseneck Post ONLY

Universal Mounting
Plate on 6" Sleeve



Post Size	Sleeve Size
3.5"	3"
4.5"	4"
5.563"	5"
6.625"	6"



Date: 4/8/15
 Rev: 12/6/22
 Drawn: MT
 Sheet: 2 of 3

SPECIFICATION / INSTALLATION INSTRUCTIONS

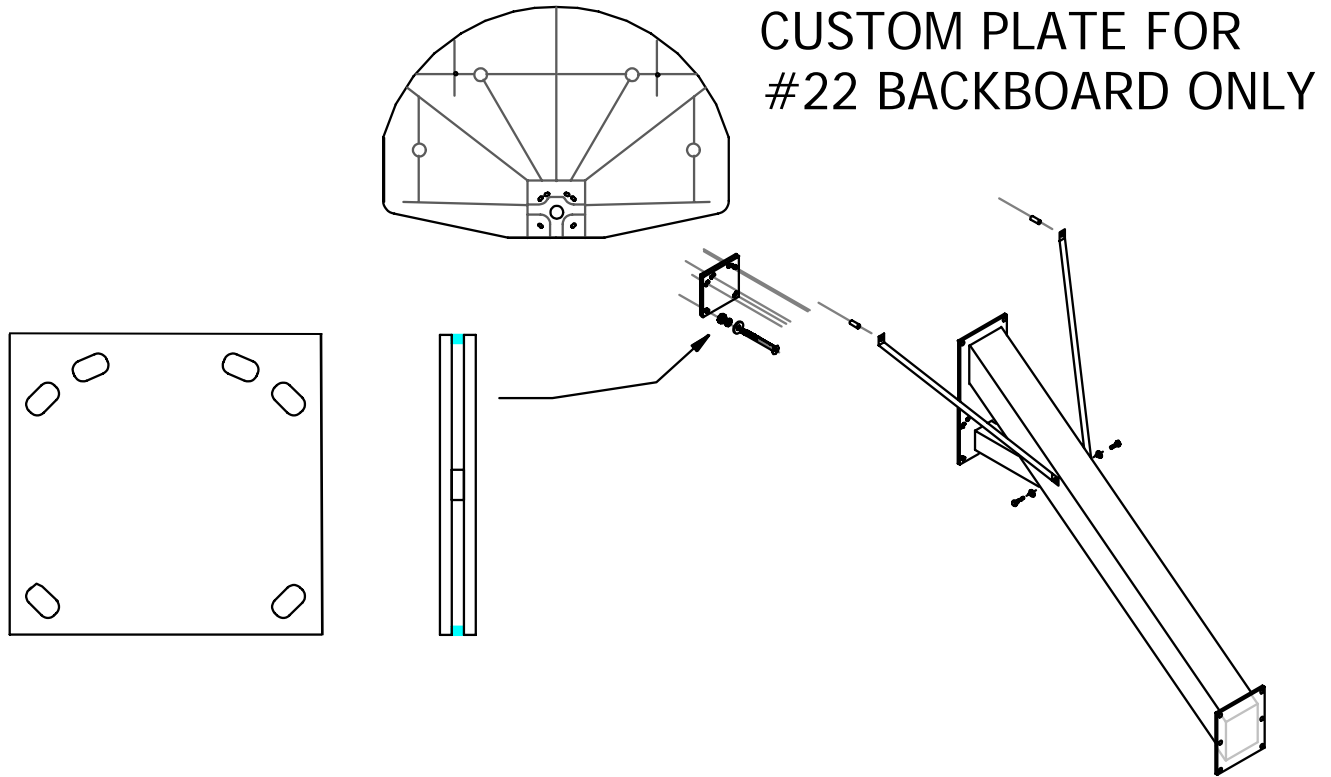
ALUMINUM "FAN" BASKETBALL BACKBOARD


MODEL NO.

22

BASKETBALL BACKBOARD

MODEL #22 HEAVY DUTY CAST ALUMINUM POWDER COATED WHITE (50 LBS)



	Date:	4/8/15	SPECIFICATION / INSTALLATION INSTRUCTIONS
	Rev:	12/6/22	<i>ALUMINUM "FAN" BASKETBALL BACKBOARD</i>
	Drawn:	MT	MODEL NO.
	Sheet:	3 of 3	22

Pick Ticket

Internal use only; return to office with packet.

Shipping to pull Backboard and hardware; nothing required from Fabrication.

<i>PART NUMBER</i>	<i>Qty</i>
KHWBB	1

<i>FOR USE ON MODEL 1576 & 1577</i>	<i>Qty</i>
KHWBB	1
3/4" Backboard Spacer	1

