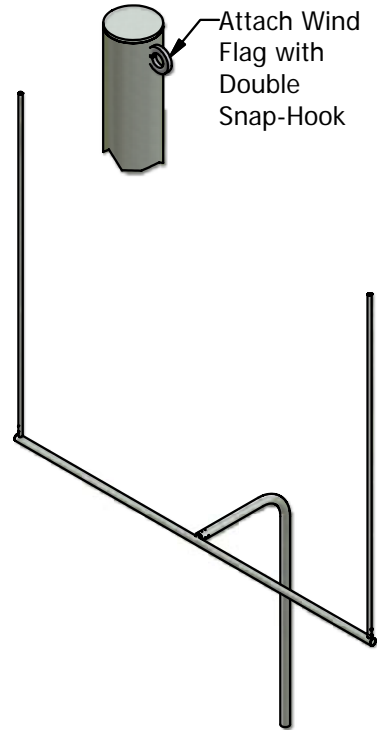
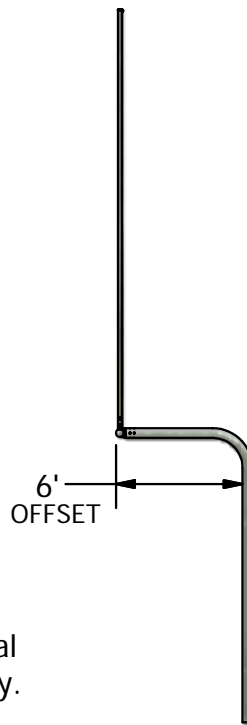
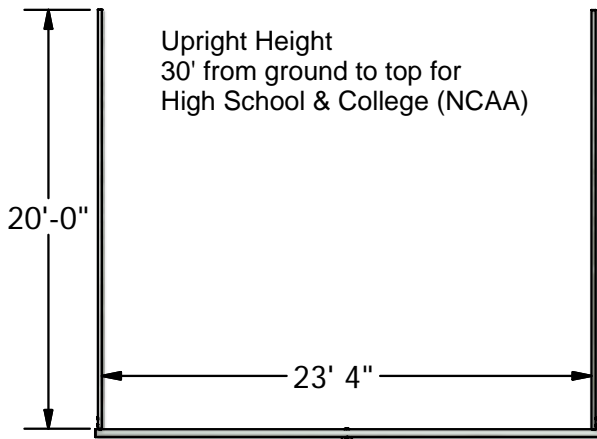


GOOSENECK STYLE FOOTBALL GOALPOSTS

MODEL #2222-20 5-9/16" O.D., 23' 4" WIDE WITH A 6' OFFSET,
HIGH SCHOOL GOAL (1200 LBS)



Note: Front Vertical Post have a 4' bury.

SPECIFICATIONS:

General: A pair of heavy-duty NCAA regulation football goals made with a 5-9/16" O.D. steel. Support post extends 4'-0" into concrete footing.

Materials: All pipe is galvanized steel.


Support Post: Fabricated from a single length of 5-9/16" O.D. steel formed to a 6' offset.

Crossbar: Consists of single length of 4-1/2" O.D. galvanized steel. A heavy galvanized steel sleeve is welded to center of crossbar, which fits inside support post and is secured with (4) four 5/8" socket set screws.

Uprights: 2-3/8" O.D. galvanized steel. Uprights sleeve over fittings on crossbar upright sleeves and secure with 5/8" socket set screws. Exposed ends are capped.

Finish: Powder Coated

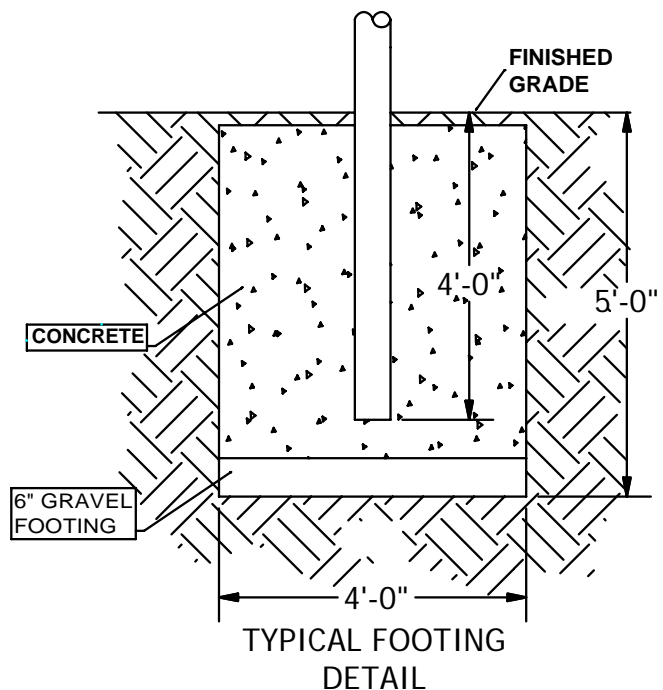
Warranty Period: 10 Years

| | | |
|---|----------------|--|
|  <p>Patterson-Williams ATHLETIC MFG. CO. QUALITY ATHLETIC AND PARK EQUIPMENT SINCE 1919</p> | Date: 08-26-11 | SPECIFICATION/INSTALLATION INSTRUCTIONS |
| | Rev: SS10517 | |
| | Drawn: AMC | MODEL NO. |
| | Sheet: 1 of 2 | 2222-20 |

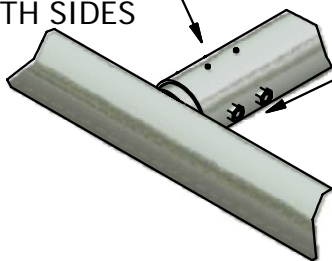
INSTALLATION INSTRUCTIONS:

1. Dig hole per footing detail approximately 60" for all models behind end line in desired location. Note: The offset is from the inside edge of bent offset post to the outside edge of the crossbar.
2. Insert crossbar into bent offset support post (gooseneck). The gooseneck has four 7/32" pre-drilled holes, two on top and two on bottom, for drive pin insertion. Level crossbar and use 7/32" drill bit to drill through the crossbar. Insert all four 1" drive pins. Tighten set screws to hold in place. Center support post in footing hole. Block, plumb and brace so the top of the crossbar is 10 feet above finish grade. Make sure crossbar is directly over the end line.
3. After checking that goal is plumb and square to field, pour concrete to within 2" of finished grade. Brace to hold in position. Let concrete set for 3 days before removal of bracing.
4. Sleeve uprights onto upright sleeve welded stubs. Tighten set screws to hold in place. Note: Attach wind flags to top of upright with brace bands provided. (See Drawing Sheet 1)
5. Cover exposed footings with turf.

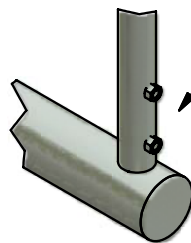
| Component Description | Qty |
|--|-----|
| 5/8"-11 X 7/8" Setscrew (Support Post) | 16 |
| 1/4" Drive Pins | 8 |
| Wind Flag | 4 |
| Double Snap Hooks | 4 |
| | |
| | |



1/4" X 1/2" DRIVE
SCREWS ON
BOTH SIDES



(2) 5/8" X 7/8"
SET SCREWS
BOTH SIDES



5/8" X 7/8"
SET SCREWS
ON BOTH
UPRIGHTS



Date: 08-26-11

Rev: SS10517

Drawn: AMC

Sheet: 1 of 2

SPECIFICATION/INSTALLATION INSTRUCTIONS

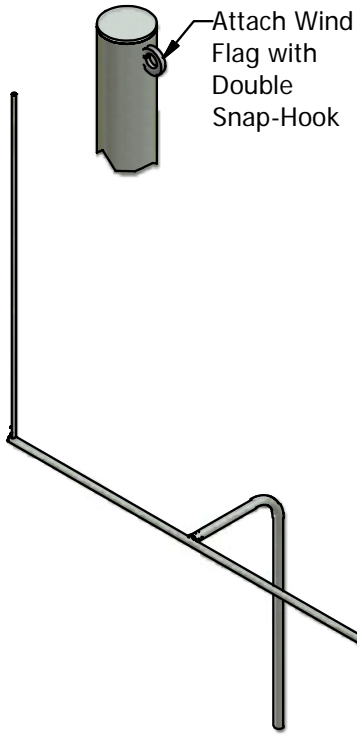
GOOSENECK STYLE GOALPOST

MODEL NO.

2222-20

Pick Ticket

Fabrication To Provide Assembly
Shipping TO Pull Hardware listed below



| Component Description | Qty |
|--|-----|
| 5/8"-11 X 7/8" Setscrew (Support Post) | 16 |
| 1/4" Drive Pins | 8 |
| Wind Flag | 4 |
| Double Snap Hooks | 4 |
| | |
| | |