

SITE FURNISHINGS

MODEL 3112-06 - 6FT. STEEL SHEET BENCH W/ BACK (150 lbs)

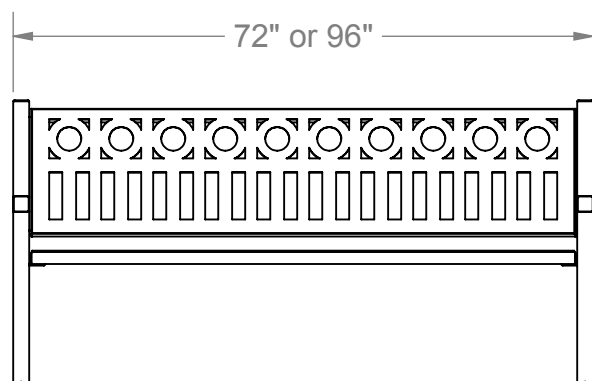
MODEL 3112-08 - 8FT. STEEL SHEET BENCH W/ BACK (165 lbs)

SPECIFICATIONS:

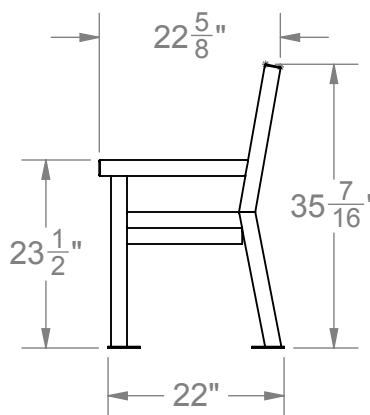
1. **SEAT/BACKREST:** Two piece assembly, 1/4" steel sheet w/ tabs welded on bottom side, then bolted to a 1-1/2" x 1-1/2" Sq. Tube, Rectangular Frame.
2. **END FRAMES:** 2" x 2" Sq. Tube w/ 3/16 Flat Bar End Caps & Feet. Weld 3" x 2" Angle & 2" Flat Bar in position provided.
3. **HARDWARE:** All hardware is Stainless Steel.
4. **FINISH:** Super durable polyester powder coat.

3112-06	3112-08	Description
2	2	End Frames
1	1	Bench Sheet Assy.
1	1	Backrest Sheet Assy.
36	37	3/8" Rivets SS

FOR POWDER COAT COLORS SEE
BACK-INSIDE COVER OF
PATTERSON-WILLIAMS CATALOG



3112
Steel Sheet Bench



(Note: Bench must be anchored. Anchoring hardware not included.)

Patterson-Williams

SITE FURNISHINGS
ARC SERIES

DATE: 11/18/15

REV: 2/22/17

DRAWN: MT

SHEET: 1 of 2

SPECIFICATION / INSTALLATION INSTRUCTIONS

ARC SERIES - 2 PIECE BENCH

3112

INSTALLATION INSTRUCTIONS

1. Bolt Bench assembly to angle on end frames with 3/8" Rivets SS (Tamper Proof).
2. Repeat same step with Backrest assembly bolted to flange on end frames.

NOTE: Sheet Assemblies are assembled to Rectangular Frame in house.



(Note: Bench must be anchored. Anchoring hardware not included.)

Patterson-Williams

SITE FURNISHINGS
ARC SERIES

DATE: 11/18/15

REV: 2/22/17

DRAWN: MT

SHEET: 2 of 2

SPECIFICATION / INSTALLATION INSTRUCTIONS

ARC SERIES - 2 PIECE BENCH

3112