

SITE FURNISHINGS

- MODEL 3120-06** 6 FT. STEEL BAR PICNIC TABLE WITH BENCHES
- MODEL 3120-08** 8 FT. STEEL BAR PICNIC TABLE WITH BENCHES
- MODEL 3120-ADA** 8 FT. ADA STEEL BAR PICNIC TABLE WITH 6' BENCHES

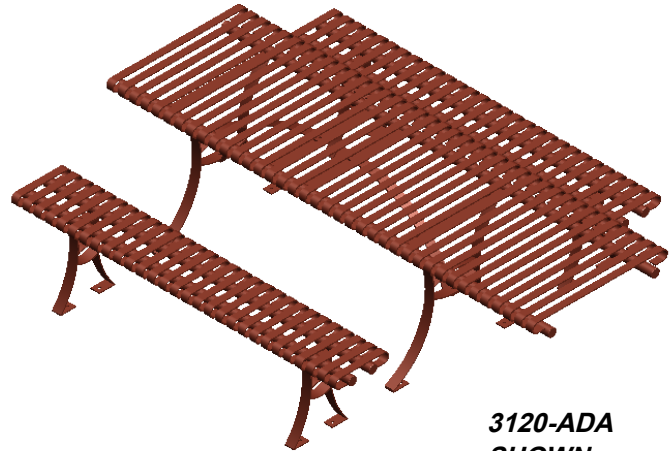
MATERIAL:

TABLE & SEAT TOP: One piece assembly with 1-1/2" x 1/4" steel bar rolled to form seat and welded to 1-5/8" heavy duty steel supports.

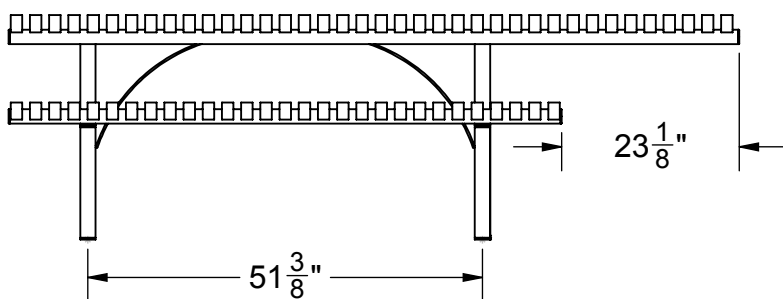
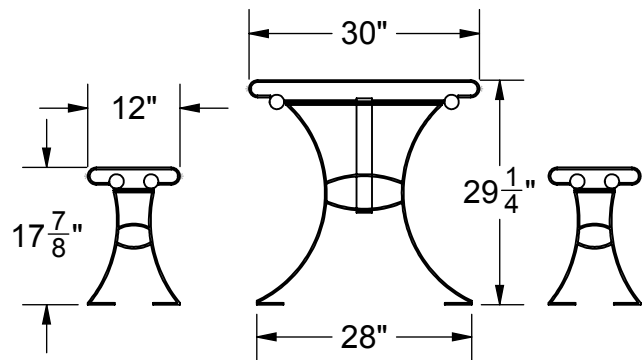
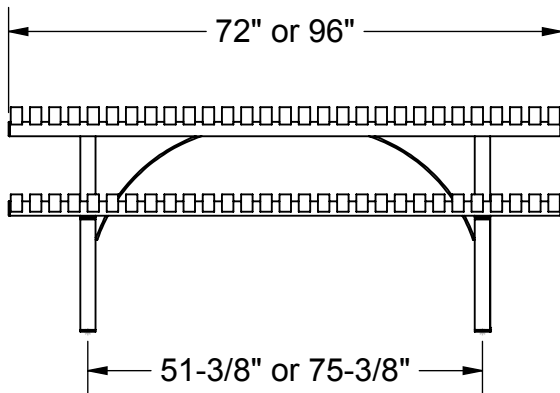
LEG FRAMES: One piece 3/8" x 2" steel bar rolled and welded to form this durable frame.

HARDWARE: All hardware is stainless steel.

FINISH: Super durable polyester powder coat.



**3120-ADA
SHOWN**



3120-06 ADA TABLE/BENCH	
QTY	MATERIAL LIST
1	TABLE TOP ASSEMBLY
2	TABLE LEG ASSEMBLY
2	TABLE BRACE
1	SEAT TOP ASSEMBLY
2	SEAT LEG ASSEMBLY
16	5/16" X 1-1/4" HEX BOLT
16	5/16" NYLOCK NUT
32	5/16" FLAT WASER

FINISH:

Super durable polyester powder coat.

(For Powder Coat colors see back-inside

cover of PATTERSON-WILLIAMS CATALOG.

(Note: Bench must be anchored. Anchoring hardware not included.)



SITE FURNISHINGS

SCALE: N.T.S.
DATE: 9/15/15
DRAWN: MT
REV: 2/22/17
SHEET: 1 of 2

SPECIFICATION / INSTALLATION INSTRUCTIONS

SOLID STEEL ROD PICNIC
TABLE WITH BENCHES

MODEL 3120-06-08

SITE FURNISHINGS

TABLE AND SEAT ASSEMBLIES ARE INSTALLED EXACTLY THE SAME.

PICNIC TABLE; SHIPS IN 3 PRE-WELDED SECTIONS,
LEG ASSEMBLY (2), TABLE TOP (1),
SUPPORT STRAPS (2).

PICNIC BENCH; SHIPS IN 3 PRE-WELDED SECTIONS,
LEG ASSEMBLY (2), SEAT TOP (1).

3120 TABLE & BENCH	
QTY	MATERIAL LIST
1	TABLE TOP ASSEMBLY
2	TABLE LEG ASSEMBLY
2	TABLE BRACE
1	SEAT TOP ASSEMBLY
2	SEAT LEG ASSEMBLY
16	5/16" x 1-1/2" HEX BOLT
16	5/16" NYLOCK NUT
32	5/16" FLAT WASHERS

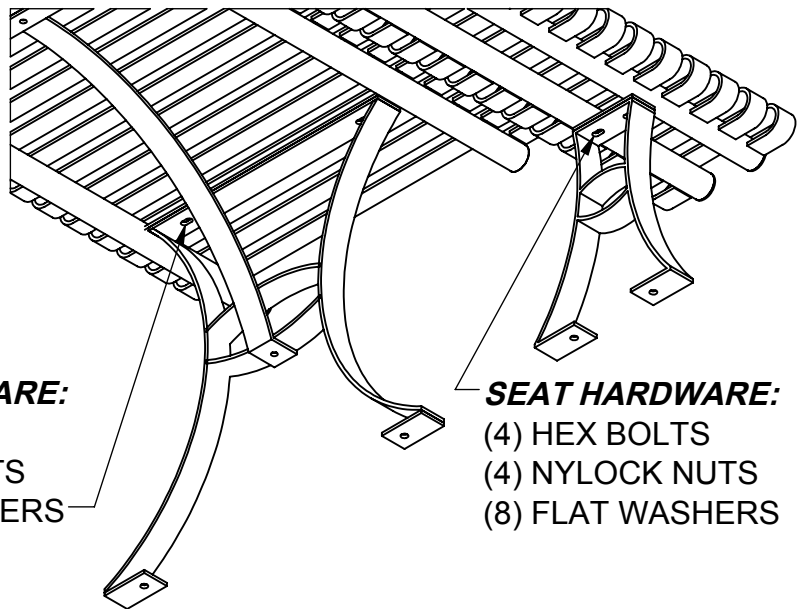


TABLE HARDWARE:
(8) HEX BOLTS
(8) NYLOCK NUTS
(16) FLAT WASHERS

SEAT HARDWARE:
(4) HEX BOLTS
(4) NYLOCK NUTS
(8) FLAT WASHERS

INSTALLATION INSTRUCTIONS:

1. Attach each leg assembly to the seat assembly with (2) 5/16" x 1-1/2" hex bolts, flat washers and hex nuts on each end. (Finger tighten only)
2. Attach table brace and legs with 5/16" hex bolts, flat washers and nylock as indicated in detail above.
3. Set bench in final position, align and then tighten all hardware.
4. Set table in final position, align and then tighten all hardware

(Note: Bench must be anchored. Anchoring hardware not included.)



SITE FURNISHINGS

SCALE: N.T.S.	SPECIFICATION / INSTALLATION INSTRUCTIONS
DATE: 9/15/15	SOLID STEEL ROD PICNIC
DRAWN: MT	TABLE WITH BENCHES
REV: 2/22/17	MODEL 3120 -06 , -08
SHEET: 2 of 2	