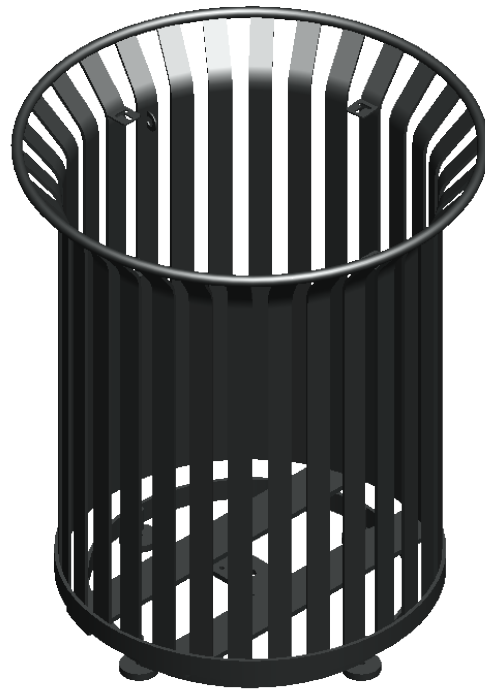
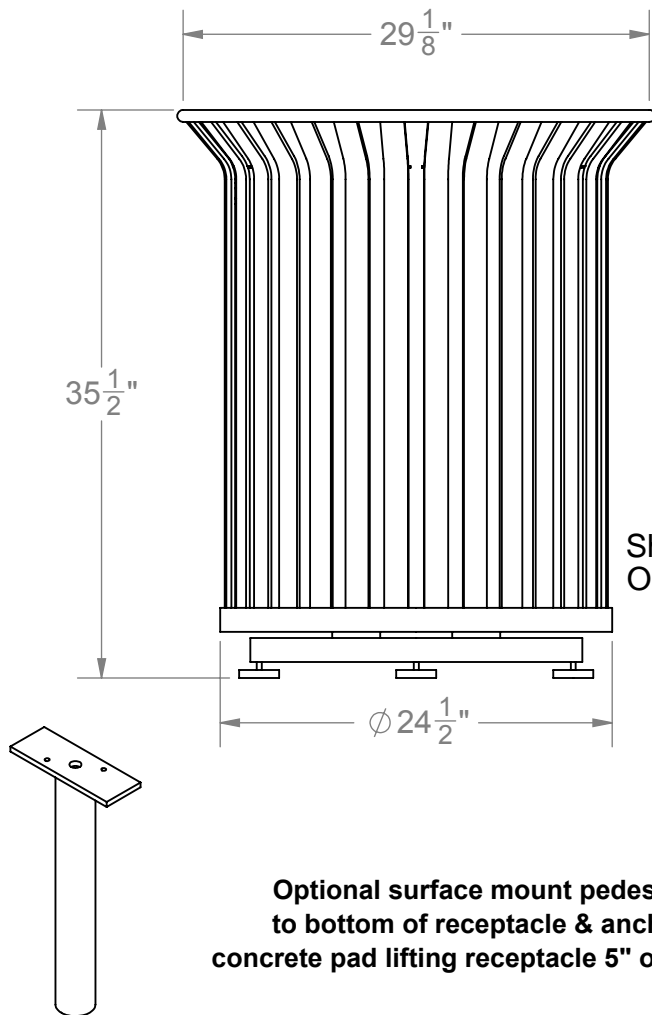


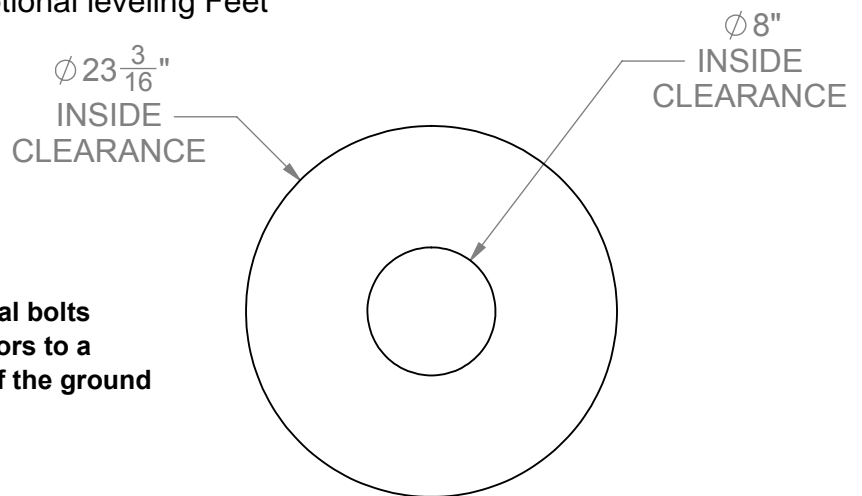
SITE FURNISHINGS

**MODEL 3150-32 GAL. STEEL ROD
LITTER RECEPTACLE WITH LID (127LBS)**

RECEPTACLE COMES COMPLETELY ASSEMBLED.
SURFACE MOUNTING IS STANDARD, & HARDWARE
TO MOUNT IS NOT INCLUDED.



FOR POWDER COAT COLORS AND
RECYCLED PLASTIC COLORS SEE
BACK-INSIDE COVER OF
PATTERSON-WILLIAMS CATALOG



SPECIFICATIONS:

1. FRAME: 1-1/2" Steel Strap (1/2" Steel Rod)
2. LID: 16 ga. Formed Steel
3. HARDWARE: HW LATCH Assembly & HINGES.
4. FINISH: Super durable polyester powder coat.
5. WARRANTY PERIOD: 3 YEARS

The flat-top steel lid has 8" diameter opening in the center & is attached with a cable to the receptacle.

(NOTE: RECEPTACLE MAY BE ANCHORED. ANCHORING HARDWARE NOT INCLUDED.)



Date: 9/14/2015
Rev: 12/2/21
Drawn: JBN
Sheet: 1 of 1

SPECIFICATION/INSTALLATION INSTRUCTIONS

3150 SERIES LITTER RECEPTACLE

MODEL NO.

3150