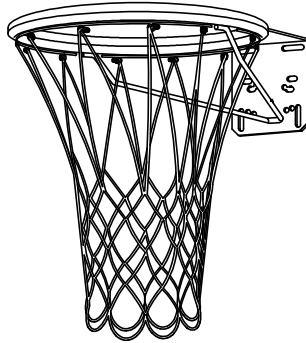


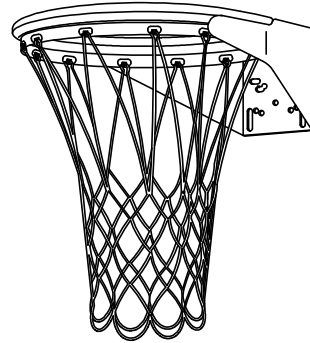
# **BASKETBALL GOAL RINGS & NETS**

MODEL #39, 41, 44, 45 GOAL RINGS

MODEL #33, 34, 35, 36 NETS



**HEAVY-DUTY  
DOUBLE RIM**



**EXTRA HEAVY-DUTY  
DOUBLE RIM**


## SPECIFICATIONS

### GENERAL:

PW Athletic offers seven types of official size goal rings and a variety of nets to meet your specific requirements. See respective model numbers and descriptions below.

### MATERIAL:

All materials are selected for strength, durability and the ability to withstand years of exposure.

	Date: 11-6-07	<b>SPECIFICATION/INSTALLATION INSTRUCTIONS</b> BASKETBALL GOAL RINGS & NETS
	Rev: SS81517	
	Drawn: AMC	MODEL NO.
	Sheet: 1 of 4	<b>BB-GOAL RINGS &amp; NETS</b>

Heavy-duty double ring goal with chain net (model #44): Goal is official size 18" diameter of 5/8" round steel with an additional ring of 1/2" diameter round steel welded together. Bottom rim is formed to accommodate S-hooks to hold net. A 3/16" thick x 6-1/2" wide heavy-duty steel mounting plate is welded to the goal rings. The mount plate is drilled with a 6-hole universal mounting pattern. Goal is finished with an orange powder coated color. Goal ring is not designed for use with nylon or other fabric-type nets.

Heavy-duty double ring goal with super nylon net (model #45): Goal is fabricated with two 18" diameter steel rings 5/8" diameter are welded together, with 1/8" diameter steel formed with 12 pigtail style net hooks welded to the bottom of the ring. A 3/16" thick x 6-1/2" wide heavy-duty steel mounting plate is welded to the goal ring which is further reinforced with a 1/2" diameter round steel support welded between each side of ring and the angle bracket. The mounting plate is drilled with a 6-hole universal mounting pattern. Goal is finished with an orange powder coated color.

Extra Heavy-duty double ring goal (model #39): Goal is official size 18" diameter round steel rim welded together. A 3/16" thick steel mounting plate is welded to the goal ring and comes drilled with a 6-hole universal mounting pattern. The rim support is welded between bottom and top rim. Net lock design is for chain and/or nylon nets. Goal is finished with an orange powder coated color.

Breakaway heavy-duty double ring goal with super nylon net (model #41): Goal is official size 18" diameter of double 5/8" diameter round steel rims welded together. A 3/16" thick steel net support welded to a 3/16" steel box shaped mounting plate swivel mounted by 1/2" diameter pin to house dual spring mechanism. Net lock design is for chain and nylon nets. Goal is finished with an orange powder coated color.

Component Description	Qty
For Boards - 13, 14, 25, and 26	
3/8"-16 X 1-1/4" Hex Bolt	4
3/8"-16 Lock Nut - Nylock	4
3/8" Flat Washer	8
For Boards - 19, 22, 23 & 24	
3/8"-16 X 2" Hex Bolt	4
3/8"-16 Lock Nut - Nylock	4
3/8" Flat Washer	8
For Boards - 18 & 20	
3/8"-16 X 2 1/2" Hex Bolt	4
3/8"-16 Lock Nut - Nylock	4
3/8" Flat Washer	8
For Boards - 10	
3/8"-16 X 3" Hex Bolt	4
3/8"-16 Lock Nut - Nylock	4
3/8" Flat Washer	8
For Boards - 27	
3/8"-16 X 3-1/2" Hex Bolt	4
3/8"-16 Lock Nut - Nylock	4
3/8" Flat Washer	8
<b>NOTE: FOR RIM #31 &amp; 38 WITH</b>	
<b>STD CHAIN NET ADD S-HOOKS</b>	12



Date:	11-6-07
Rev:	SS81517
Drawn:	AMC
Sheet:	2 of 4

<b>SPECIFICATION/INSTALLATION INSTRUCTIONS</b>
BASKETBALL GOAL RINGS & NETS
MODEL NO.
<b>BB-GOAL RINGS &amp; NETS</b>

Replacement Chain Net, model #33: Zinc plated steel chain net with S-hooks to secure all goals.

Replacement Super Nylon Net, model #34: Extra heavy braided nylon net to reduce net whip.

Replacement Super Chain Net, model #35: Zinc plated steel chain net with all loops welded closed to prevent snagging or opening.

Note: For net attachment see following page.

Goal Warranty Period: Limited Lifetime

For #33 & #35 chain nets slip s-hooks through holes on the goal rings (Models #37, #38, #44 & #31) and fully close.

For #34 Super Nylon Net on goal ring Models #39 & #41 twist loop on net. From the inside of the rim, slip the twisted loop through the punched net tie-off hole to the outside of the rim. Wrap twisted loop around goal ring and back through punched net tie-off ring. Secure around neck of the punched tie-off hole and pull tight.

For #34 Super Nylon Net on goal ring Model #45 slip the net loop through from the inside through the welded net tie-off wire and hook onto middle of tie-off wire and pull tight.


Model#	Description	Net Type	Wt #
39	Extra Heavy-Duty Double Rim	Super Nylon	28 lbs.
41	Breakaway Extra Heavy-Duty Double Rim	Super Nylon	29 lbs.
44	Heavy-Duty Double Rim	Super Chain	19 lbs.
45	Heavy-Duty Double Rim	Super Nylon	18 lbs.

For installation of goal rings to PW Athletic backboards and posts ONLY. For other manufacturer's posts and backboards please consult installation instructions provided by that manufacturer.

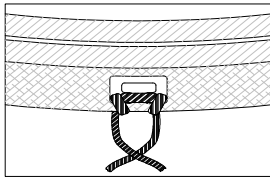
**Caution: Flat washers must be used behind plate when mounting backboard.**

Align mounting holes in goal ring mounting plate with the corresponding holes in the backboard and gooseneck adaptor mount using installation hardware (bolts). Install lock nuts and tighten enough to hold board and goal ring in position.

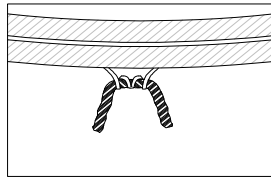
Plumb backboard true vertical (shim if necessary) and goal ring level. Tighten all hardware securely. Install net. If the goal ring is equipped with chain net, make sure all S-hooks are fully closed

	Date: 11-6-07	<b>SPECIFICATION/INSTALLATION INSTRUCTIONS</b> BASKETBALL GOAL RINGS & NETS
	Rev: SS81517	
	Drawn: AMC	MODEL NO.
	Sheet: 3 of 4	<b>BB-GOAL RINGS &amp; NETS</b>

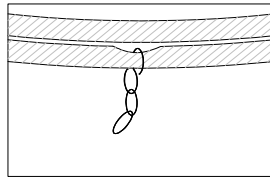
## NETTING OPTIONS



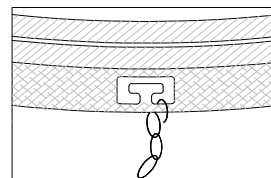
MODEL #39  
MODEL #41



MODEL #45



MODEL #41  
MODEL #44



MODEL #39  
MODEL #41



### MODEL #36 VINYL CABLE NET INSTALLATION INSTRUCTIONS:

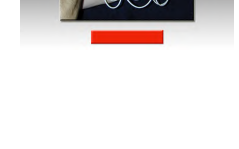
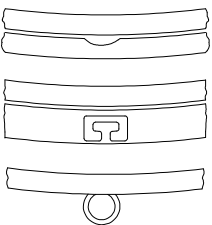
1) Starting at the back of the rim, thread the orange rimlock cable through one side of a net connector (Fig. 1a), then through the eyelet of the net (Fig. 1b) & finally through the other end of the net connector (Fig. 1c). Pull the cable firmly forcing the net eyelet up into the middle of the net connector (Fig. 1d). Leave approximately 4" of cable behind this first net connector to allow for connection with the other end of the cable at the end of the threading process. Repeat the threading process through the remaining 11 connection points on the rim, pulling all slack from the cable as you go. (Note: The net eyelet must be centered in the net connector to prevent sideways movement of the net around the rim)

2) When all of the eyelets are threaded, the two ends of the rimlock cable must be secured together. Ensure that there is no slack in the cable at any point. Thread the two cable ends into opposing sides of the supplied aluminum sleeve (Fig. 2a). Using a large pair of pliers, crimp the sleeve flat at both ends against the rimlock cable (Fig. 2b). This must be crimped well to prevent the cable from slipping.

3) Due to it's unique construction, it is very important to stretch the net in the middle and bottom sections to prevent the ball from sticking (Fig. 3a & 3b). Grab opposing sides and pull hard. Repeat this stretching technique all the way around the middle and bottom of net. Cold weather may require re-stretching.

### THESE STYLE OF RIMS USE THE FOLLOWING METHOD:

The orange rimlock cable will travel around the outside of the rim and weave in and back out of each rim connector. Feed the cable from the outside of the rim in, threading it through one net eyelet. (Leave 4" of cable tail from your starting point) Continue threading the cable back from the inside to the outside of the rim using the same connector. Pull tight all slack in the cable as you go. This will force the net eyelet close to the given rim connector. Repeat for all 11 remaining connections and terminate the cable with the supplied sleeve as in step above.



<p><b>ATHLETIC MFG. CO.</b></p>	Date: 11-6-07	<p><b>SPECIFICATION/INSTALLATION INSTRUCTIONS</b></p> <p><b>BASKETBALL GOAL RINGS &amp; NETS</b></p> <hr/> <p>MODEL NO.</p> <p><b>BB-GOAL RINGS &amp; NETS</b></p>
	Rev: SS81517	
	Drawn: AMC	
	Sheet: 4 of 4	