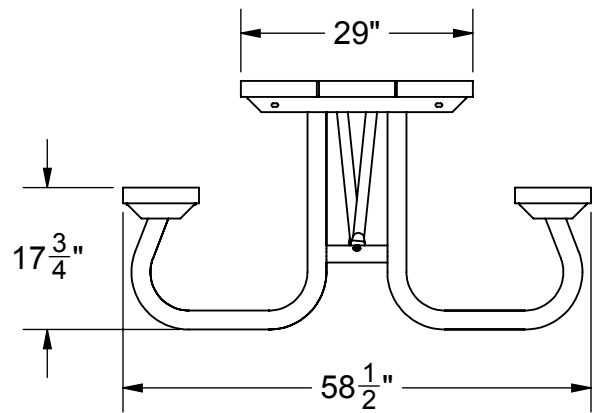
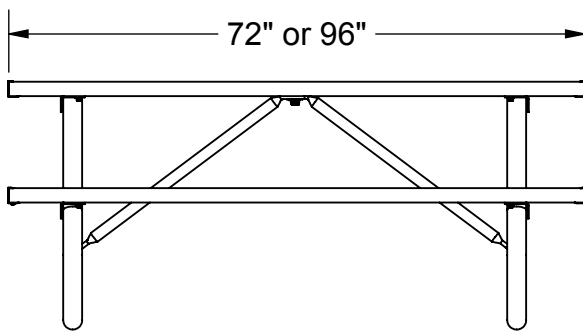
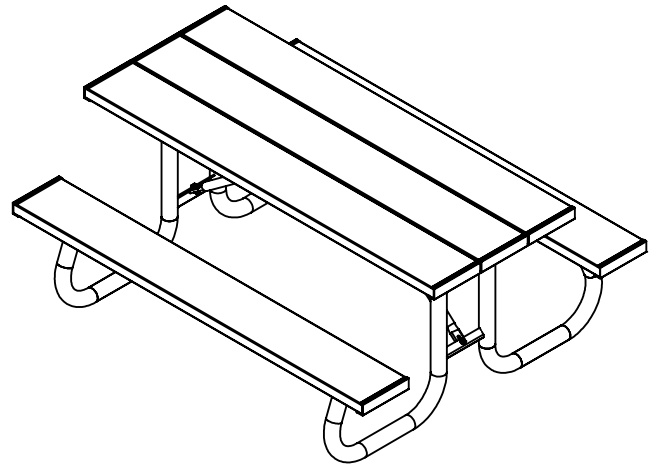


ALUMINUM PICNIC TABLE

MODEL 1131-06 6 FT. PICNIC TABLE (170 LBS)
MODEL 1131-08 8 FT. PICNIC TABLE (180 LBS)



SPECIFICATIONS:

General: A heavy-duty table with galvanized steel frames and anodized aluminum seats and table planks.


Table Support Assembly: Formed and welded into a single unit consisting of 2-3/8" O.D. galvanized steel and 2" x 3" x 3/16" steel angle. Two supports are supplied for 6' & 8' tables. Welded construction of frames eliminates excess hardware and simplifies assembly. The result is a wide end-frame designed for anti-tipping protection without permanent anchoring.

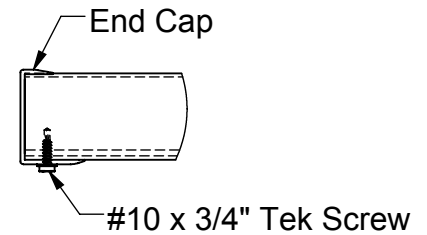
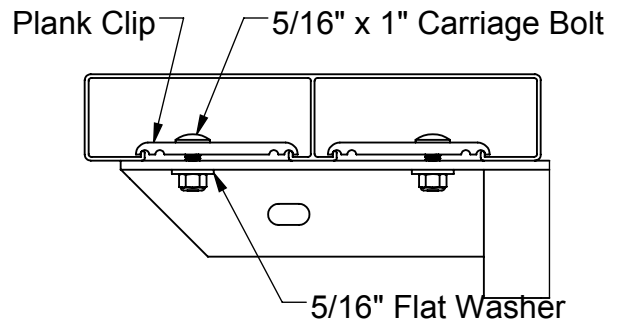
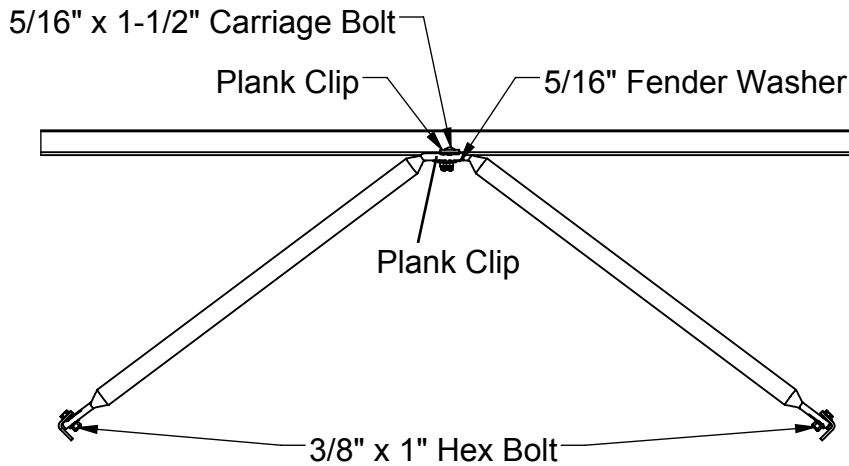
Table Support Brace: 1-3/8" O.D. galvanized steel.

Aluminum Table Top & Seats: 2" x 10" nominal size anodized aluminum planks.

Finish: Aluminum plank finish is clear anodized. All hardware is zinc-plated for long rust-free service. Frames available galvanized or coated with polyester TGIC powder coating.

Warranty Period: 3 years.

 <p>ATHLETIC MFG. CO.</p>	Date: 3/10/2015	SPECIFICATION / INSTALLATION INSTRUCTIONS <i>ALUMINUM PICNIC TABLE</i>
	Rev: 2/22/17	
	Drawn: MT	MODEL NO.
	Sheet: 1 of 2	1131-06 & -08



INSTALLATION INSTRUCTIONS:

- 1) Locate five (5) aluminum planks and ten (10) end caps. Assemble end caps to aluminum planks using two (2) Tek screws in each end cap.
- 2) Lay three (3) planks upside down next to each other making sure planks are aligned.
- 3) Position table support assembly upside down across the three (3) planks. Align the mounting holes in the welded angle (top of the table support assemblies) approximately 8-1/4" from the ends. The two (2) center table support assemblies are positioned 55-1/2" on center for the 6' table and 79-1/2" on center for the 8' table. Attach the table support assemblies using aluminum plank clips and 5/16" x 1" carriage bolts, washers, and nuts provided. NOTE: Tighten bolts only finger tight until assembly is completed.
- 4) Attach table support braces to welded angled spacer on table support assemblies. Use 3/8" x 1" hex bolts, washers, and nuts provided.
- 5) The other end of the table support brace is attached using aluminum plank clips and 5/16" x 1-1/2" carriage bolt, washer and nut provided.
- 6) Attach seat planks using same method as table planks above.
- 7) When table is completely assembled, straighten and align end frames and plank ends. Tighten all hardware. Turn table over and set in final position.

DESCRIPTION	-06 QTY.	-08 QTY.
Picnic Table J Frame	2	2
Aluminum Plank - 6 FT.	5	
Aluminum Plank - 8 FT.		5
Table Brace - 35"	2	
Table Brace - 45"		2
Aluminum End Cap	10	10
#10 x 3/4" Tek Drive Screw	20	20
Aluminum Plank Clip	24	24
5/16" x 1" Carriage Bolt	20	20
5/16" Flat Washer	22	22
5/16" Lock Nut	22	22
5/16" x 1-1/2" Carriage Bolt	2	2
5/16" Fender Washer	2	2
3/8" x 1" Hex Bolt	2	2
3/8" Flat Washer	4	4
3/8" Lock Nut	2	2



Date: 3/10/2015
 Rev: 2/22/17
 Drawn: MT
 Sheet: 2 of 2

SPECIFICATION / INSTALLATION INSTRUCTIONS

ALUMINUM PICNIC TABLE

MODEL NO.

1131-06 & -08

Pick Ticket

Internal use only return to office with packet

Shipping to pull Plank, Braces, and Hardware. Fabrication to provide table legs if shortages occur notify office immediately.

DESCRIPTION	-06 QTY.	-08 QTY.
Picnic Table J Frame	2	2
Aluminum Plank - 6 FT.	5	
Aluminum Plank - 8 FT.		5
Table Brace - 35"-CIPICTAB6	2	
Table Brace - 45"-CIPICTAB8		2
Aluminum End Cap	10	10
#10 x 3/4" Tek Drive Screw	20	20
Aluminum Plank Clip	24	24
5/16" x 1" Carriage Bolt	20	20
5/16" Flat Washer	22	22
5/16" Lock Nut	22	22
5/16" x 1-1/4" Carriage Bolt	2	2
5/16" Fender Washer	2	2
3/8" x 1" Hex Bolt	2	2
3/8" Flat Washer	4	4
3/8" Lock Nut	2	2

